



Publications
of the
Louisiana Geological Survey

2016





STATE OF LOUISIANA

John Bel Edwards, Governor


LOUISIANA STATE UNIVERSITY


Alexander F. King, President and Chancellor

LOUISIANA GEOLOGICAL SURVEY

Chacko J. John, Director and State Geologist

Professor - Research





Publications
of the
Louisiana Geological Survey

2016

Baton Rouge

Prices effective July 1, 2016



CONTENTS

Geological Bulletins	1
Early Reports	1
Geological Bulletins	2
Geological Pamphlets	6
Coastal Geology Technical Reports	8
Maps and Atlases	9
Geologic Maps	11
Geologic Quadrangle Maps (1:100,000)	12
Geologic Quadrangle Maps (1:24,000)	17
Mineral Resources Maps	18
Open-File Geologic Quadrangle Maps (1:24,000)	18
Open-File Geologic Quadrangle Maps (1:100,000)	18
Water Resources Maps	18
Folio Series	19
Guidebook Series	20
Anthropological Studies Series	20
Paleontological Studies	21
Resources Information Series	21
Mineral Resources Bulletins	22
Clay Resources Bulletins	22
Water Resources Series	22
Water Resources Bulletins	23
Water Resources Pamphlets	24
Open-File Series	26
Report of Investigations Series	30
Educational Series	31
Public Information Series	32
Reprints	33
Energy Series	34
Basin Research Institute Bulletins	35
Poster Series	36
State Parks and Land Series	36
Parish Index	37
Product Ordering Information	41
Order Form	41

Louisiana Geological Survey



The Survey's nine preliminary publications, from 1899 to 1909, are out of print, but are available in digital (pdf) form. Hardcopies can be viewed in the Special Collections at Hill Memorial Library on the LSU campus.

Geological Bulletins Early Reports

Supplementary and Final Report of a Geological Reconnaissance of the State of Louisiana

by E.W. Hilgard, 1869, 44 pp.

Contains an overview of mineral resources and general topographic, agricultural, and botanical features in specific regional areas. \$10.00

The Second Annual Report of the Geological Survey of Louisiana to the General Assembly,

by F.V. Hopkins, 1871, 34 pp.

Discusses the first appearance of a preliminary map showing formations. \$10.00

A Preliminary Report on the Geology of Louisiana,

by G.D. Harris and A.C. Veatch, 1899, 417 pp.

Contains three sections: historical review, general geology, and special papers. \$20.00

A Report on the Geology of Louisiana, Containing Special Papers by Different Authors,

by G.D. Harris, A.C. Veatch, and J.A. Pacheco, 1902, 323 pp.

Contains eight divisions that cover geography, geology, cartography, oil, and hydrology. \$20.00

Bulletin 1 - A Report on the Underground Waters of Louisiana

by G. D. Harris, A. C. Veatch, and others, 1905, 178 pp.

Discusses topography and stratigraphy, and subdivides sections of south Louisiana based on underground water conditions. Also includes well statistics. \$15.00

Bulletin 2 - A Report on Terrestrial Magnetism and Meridian Line Work in Louisiana

by G. D. Harris et al. ,1905, 59 pp.

Includes isomagnetic charts, terrestrial magnetic measurements, and results of magnetic observations in Louisiana. \$10.00

Bulletin 3 - A Report on the Establishment of Tide Gage Work in Louisiana

by G. D. Harris, 1905, 33 pp .

Explains purposes and reasons for tide gage work and the establishment of bench marks using Weeks Island, Louisiana as an example. \$ 10.00

Bulletin 4 - Geology and Underground Water Resources of Northern Louisiana

by A. C. Veatch, 1905, 289 pp .

Discusses geology and underground water conditions in northern Louisiana, methods and costs of well making, and outlines underground water prospects by parish. \$20.00

Bulletin 5 - Notes on the Geology of the Winnfield Sheet

by G. D. Harris, 1907, 36 pp.

Discusses topography, geology, and economic geological prospects in the region. \$10.00

Bulletin 6 - Cartography of Southwestern Louisiana with Special Reference to the Jennings Sheet

by G. D. Harris , 1907, 24 pp.

Discusses cooperative survey work with the US Geological Survey in this era, and the mapping of surface features in the Delcambre, New Iberia and Jennings quadrangle sheets. \$10.00

Bulletin 7 - Rock Salt: Its Origin, Geological Occurrences and Economic Importance in the State of Louisiana

by G. D. Harris, 1907, 317 pp.

Discusses the structure, locations, and prospects of salt domes and mines in Louisiana, as well as those all over the United States and the world. \$20.00

Bulletin 8 - Oil and Gas in Northwestern Louisiana with Special Reference to Caddo Field

by G. D. Harris, I. Perrine, and W. E. Hopper, 1909, 60+ pp.

Discusses stratigraphy of northwestern Louisiana, limits of known producing areas, geologic horizons of oil and gas, oil and gas production of Caddo Field. Includes analysis of Caddo oil and gas, and logs of representative wells. Not yet available.

The Survey's Geological Bulletins are comprehensive reports on geologic or related studies. They generally cover a broad subject area and/or a geographic location.

Geological Bulletins Modern Reports

- 1 Geology of Iberia Parish,**
by H.V. Howe and C.K. Moresi, 1931, 187 pp.
Includes discussions of physiography, with special reference to Pleistocene terraces and to drainage; stratigraphy; origin of the salt domes and caprock; and mineral resources. Includes annotated bibliography. Out of print (photocopy available) \$25.00
- 2 Foraminifera of the Jackson Eocene at Danville Landing on the Ouachita, Catahoula Parish, Louisiana,**
by H.V. Howe and W.E. Wallace, 1932, 118 pp.
Describes and illustrates 125 species and varieties; proposes 2 new genera. Out of print (photocopy available) \$20.00
- 3 Geology of Lafayette and St. Martin Parishes,**
by H.V. Howe and C.K. Moresi, 1933, 238 pp.
Discusses Pleistocene terraces, Mississippi River meanders, and drainage; also, stratigraphy, salt domes, and prospective domes. Includes annotated bibliography. Out of print (photocopy available) \$25.00
- 4 Louisiana Sabine Eocene Ostracoda,**
by H.V. Howe and J.B. Garrett Jr., 1934, 64 pp.
Describes and illustrates 31 species, 25 of which are new, from 4 Sabine (Wilcox) localities. Out of print (photocopy available) \$20.00
- 5 Louisiana Jackson Eocene Ostracoda,**
by H.V. Howe and J. Chambers, 1935, 65 pp.
Describes and illustrates 43 species and varieties from 17 localities; proposes 1 new genus. \$20.00
- 6 Reports on the Geology of Cameron and Vermilion Parishes,**
by H.V. Howe and others, 1935, 242 pp.
Discusses Pleistocene Mississippi River deltas, cheniers, Gulf Coast subsidence, and isostatic data of Mississippi sedimentation; also, salt domes and microfossils of the Potamides matsoni zone. Includes list of maps and annotated bibliography. Out of print (photocopy available) \$25.00
- 7 Louisiana Vicksburg Oligocene Ostracoda,**
by H.V. Howe and J. Law, 1936, 96 pp.
Describes and illustrates 75 species from 30 localities; proposes 3 new genera. \$20.00
- 8 Lower Mississippi River Delta: Reports on the Geology of Plaquemines and St. Bernard Parishes,**
by R.J. Russell and others, 1936, 454 pp.
Includes reports on physiography of lower Mississippi River delta and salt domes, annotated bibliography, list of maps, petrology of two Mississippi River subdeltas, pebbles of the Chandeleur Islands, recent mollusks, Indian mounds, and vegetation of marshes and mounds. \$30.00
- 9 Geology of Catahoula and Concordia Parishes,**
by W.D. Chawner, 1936, 232 pp.
Discusses geography and physiography of the alluvial valley of the Mississippi River, the upland terraces, and hill country; surface out crops and stratigraphy; and economic and petroleum geology. Includes multicolored geologic map scale 1:62,500, list of maps, and annotated bibliography. \$30.00

- 10 Geology of Grant and La Salle Parishes,**
by H.N. Fisk, 1938, 246 pp.
Discusses physiography, stratigraphy, and petroleum geology; distribution, correlation, and age of Pleistocene terrace deposits. Briefly outlines archeology, early settlement, and development of the parishes. Includes two multicolored geologic maps (scale 1:62,500) and annotated bibliography. \$30.00
- 11 Origin of the Cap Rock of Louisiana Salt Domes,**
by R.E. Taylor, 1938, 191 pp.
Discusses origin and general geology of the salt and cap rock of Louisiana salt domes; chemical composition of salt; minerals in salt and cap rock; and the origin and occurrence of sulphur. Includes map of Louisiana salt domes. \$20.00
- 12 Contributions to the Pleistocene History of the Florida Parishes of Louisiana,**
by H.N. Fisk and others, 1938, 137 pp.
Includes reports on physiography and geology of Pleistocene exposures in the western Florida Parishes; Pleistocene freshwater mollusks from Louisiana and Mississippi; mollusks from the loess at Tunica; flora of Pleistocene deposits; and Pleistocene mosses from Louisiana. \$20.00
- 13 Reports on the Geology of Iberville and Ascension Parishes,**
by H.V. Howe and others, 1938, 223 pp.
Includes reports on the geography and physiography of the central portion of the existing delta of the Mississippi River and adjacent terraces; salt domes; Indian mounds; and fossils. \$25.00
- 14 Louisiana Cook Mountain Eocene Foraminifera,**
by H.V. Howe, 1939, 122 pp.
Describes and illustrates 170 species and varieties of Claiborne foraminifera from 169 Louisiana samples, 167 of which are from Cook Mountain Formation and 2 thought to be from the Sparta Formation. \$20.00
- 15 Geology of Caldwell and Winn Parishes,**
by J. Huner Jr., 1939, 356 pp.
Discusses geography and physiography of the alluvial valleys of the Ouachita River and Saline Bayou, the upland terraces, and hill country; surface outcrops and stratigraphy; salt domes, petroleum geology, and other economic resources. Includes two multicolored geologic maps (scale 1:62,500). \$30.00
- 16 Reports on the Surface Water Supply of Louisiana to September 30, 1938,**
by R.E. Marsh, 1939, 198 pp.
Presents stream-flow data collected by the Louisiana Geological Survey; describes 30 new gaging stations established in Louisiana during 1938-39 by the Department of Conservation and the U.S. Geological Survey. \$20.00
- 17 Ground-Water Resources of Rapides Parish, Louisiana,**
by J.C. Maher, 1940, 100 pp.
Discusses geologic formations and their water-bearing properties; also, the springs, water wells, and water supplies of Alexandria and other municipalities. Contains tables showing water levels, pressures, and water quality. \$20.00
- 18 Geology of Avoyelles and Rapides Parishes,**
by H.N. Fisk, 1940, 240 pp.
Discusses ancient and present channels of the Mississippi and Red rivers; Pleistocene physiographic history; and stratigraphy and sedimentation of the Miocene formations. Includes stratigraphy, structure, and production of the Cheneyville and Eola fields and detailed structure maps for these fields. Includes multicolored geologic map (scale 1:62,500). \$35.00



- 19 The Sand and Gravel Deposits of Louisiana,**
by T.P. Woodward and A.J. Gueno Jr., 1941, 429 pp.
Discusses location, size, and development of various sand and gravel pits as well as mechanical and chemical analyses of samples collected. Also contains short report, "Subsurface Pleistocene of Louisiana" by J.W. Frink. \$30.00
- 20 Ground-Water Resources of Grant and La Salle Parishes,**
by J.C. Maher, 1941, 95 pp.
Discusses water-bearing properties of geologic formations, chemical character of the water, and available water supply. Also, contains records and logs of water wells and chemical analyses of water-well samples. \$20.00
- 21 Louisiana Tertiary Bryozoa,**
by J.H. McGuirt, 1941, 177 pp.
Describes 55 species. Contains illustrated partial glossary and check list of species. \$20.00
- 22 Geology of Vernon Parish**
by R.N. Welch, 1942, 90 pp.
Discusses geology and physiography of the area. Contains subsurface contour maps, cross sections, and well data. Out of print (photocopy available) \$30.00
- 23 Lower Eocene Faunal Units of Louisiana,**
by J.O. Barry and R.J. LeBlanc, 1942, 208 pp.
Deals primarily with stratigraphic and geographic distribution of molluscan fauna of the Sabine (Wilcox) and Midway groups of Louisiana. \$20.00
- 24 Ground-Water Conditions in the Monroe Area, Louisiana,**
by P.H. Jones and C.N. Holmes, 1947, 47 pp.
Describes geology of formations that occur at less than 1,000 feet in the area, with emphasis on the Sparta Sand; also discusses hydrology, ground-water quality, and water supplies. Out of print (photocopy available) \$20.00
- 25 Geology of De Soto and Red River Parishes,**
by G.E. Murray, 1948, map pack, 312 pp.
Discusses physiography, stratigraphy, and petroleum geology of the area. Includes two multicolored geologic maps (scale 1:62,500). \$30.00
- 26 The Harang Fauna of Louisiana,**
by D.E. Pope and D. Jeter Smith, 1948, 80 pp.
Contains two papers, "Occurrence of Harang Fauna of the Eastern Louisiana Coastal Parishes" and "Miocene Foraminifera of the Harang Sediments of Southern Louisiana." \$20.00
- 27 Geology of Beauregard and Allen Parishes,**
by W.C. Holland, L.W. Hough, and G.E. Murray, 1952, map pack, 224 pp.
Discusses subsurface stratigraphy, structure, and petroleum geology of the area. Includes two multicolored geologic maps (scale 1:62,500). \$30.00
- 28 Geology of Ouachita Parish,**
by K.K. Wang, 1952, map pack, 126 pp.
Discusses physiography and surface and subsurface geology of the parish and surrounding area. Includes multicolored geologic map (scale 1:62,500). \$25.00
- 29 Geology of Webster Parish,**
by J.L. Martin and others, 1954, map pack, 252 pp.
Discusses physiography, stratigraphy, and petroleum geology. Includes multicolored geologic map (scale 1:62,500). \$25.00

- 30 Geology and Ground-Water Resources of Southwestern Louisiana,**
by P.H. Jones, A.N. Turcan Jr., and H.E. Skibitzke, 1954, map pack, 285 pp.
Discusses groundwater resources of Acadia, Allen, Beauregard, Calcasieu, Cameron, Evangeline, Iberia, Jefferson Davis, Lafayette, St. Landry, St. Martin, St. Mary, and Vermilion parishes; also, the late Tertiary and Quaternary geology of the area. \$30.00
- 31 Geology of Evangeline and St. Landry Parishes,**
by G.G. Varvaro, 1957, map pack, 295 pp.
Discusses physiography, surface and subsurface geology, and petroleum geology of the parishes and surrounding area. Lists all wells drilled in the two parishes. Includes multicolored geologic map (scale 1:62,500). \$30.00
- 32 Cretaceous Ostracoda of Prothro and Rayburns Salt Domes, Bienville Parish, Louisiana,**
by E.A. Butler and D.E. Jones, 1957, 65 pp.
Describes and illustrates 22 genera, 2 of which are new, and 40 species, 8 of which are new. \$20.00
- 33 The Subsurface Jurassic Bodcaw Sand in Louisiana,**
by B.J. Sloane Jr., 1958, map pack, 33 pp.
Discusses structure and stratigraphy of the Bodcaw Sand. Includes several cross sections. \$20.00
- 34 Geology of Sabine Parish,**
by H.V. Andersen, 1960, map pack, 164 pp.
Discusses stratigraphy and structure of the parish. Includes multicolored geologic map (scale 1:62,500). \$30.00
- 35 Genesis and Paleontology of the Mississippi River Mudlumps,**
by J.P. Morgan and H.V. Andersen, 1961, map pack, 324 pp.
Contains two studies: one on the origin, nature, and distribution of the mudlumps and the other on the foraminifera of mudlumps. \$30.00
- 36 Geology of Acadia and Jefferson Davis Parishes,**
by W.R. Paine, 1962, map pack, 277 pp.
Deals primarily with subsurface Tertiary geology, with special emphasis on the Frio and Anahuac formations with a discussion of growth faulting, regional faulting, and sedimentation. Discusses producing fields and lists wildcat wells. \$30.00
- 37 Geology of Bossier Parish (unpublished).**
Printed map of parish is available through Parish Geologic Maps.
(See Maps and Atlases, Geologic Maps section.)
- 38 The Palynologic Age of Diapiric and Bedded Salt in the Gulf Coastal Province,**
by U.V. Jux, 1961, 46 pp.
Determines the age of the salt through the use of fossil pollen spores, algae, and fungi. \$15.00
- 39 Ostracoda and Correlation of the Upper and Middle Frio from Louisiana to Florida, with a Discussion of the Gulf Coast Miocene-Oligocene Boundary,**
by E.A. Butler, 1963, 100 pp.
Describes and illustrates 35 species used for correlation in this petroleum-rich interval. \$20.00



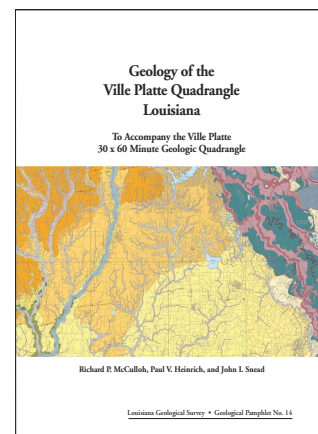
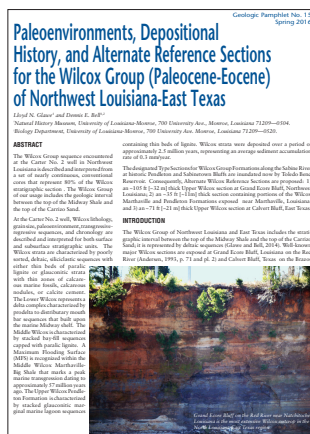
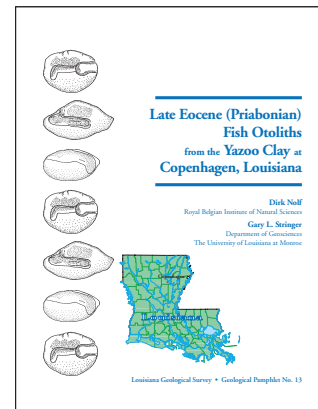
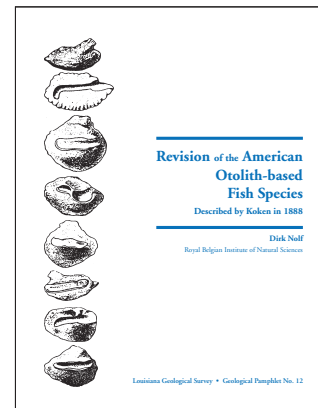
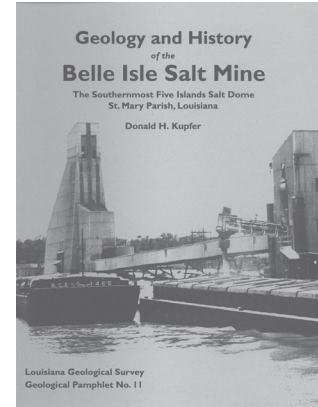
- 40 Type Saline Bayou Ostracoda of Louisiana,**
by R. Crombie Howe, 1963, 62 pp.
Presents the 29 species found in the samples taken at the type locality of the Saline Bayou member, Cook Mountain Formation (Winn Parish). Describes 2 new genera and 6 new species. \$15.00
- 41 Iron Ore of Central North Louisiana,**
by C.O. Durham Jr., 1964, map pack, 127 pp.
Presents detailed mapping of 12 local iron ore districts, with a discussion of the extent, quality, and reserves of brown and green ores. \$25.00
- 42 Cenozoic Cyclic Deposition in the Subsurface of Central Louisiana,**
by L.H. Dixon, 1965, map pack, 124 pp.
Presents results of a regional study, made primarily by electric logs, supporting the concept that major cycles of deposition represent natural divisions of the Cenozoic on the northwestern margin of the gulf basin. \$20.00
- 43 Part I, Computer-Aided Subsurface Structural Analysis of the Miocene Formations of the Bayou Carlin–Lake Sand Area, South Louisiana, and Part II, Production Mechanisms of the Geopressed Gas Reservoirs of Lake Sand Field, South Louisiana,**
by M.B. Kumar, 1977, 264 pp.
Part I: Compares computer-generated subsurface maps to conventional maps; both are used to infer the structural evolution of the area.
Part II: Discusses pressure behavior in deep-gas reservoirs having known vs. unknown gas-water contacts. \$15.00
- 44 Geology of Natchitoches Parish,**
by H.V. Andersen, 1992, 227 pp.
Discusses physiography, surface and subsurface geology, and structure of the parish. Includes multicolored geologic map (scale 1:62,500). \$40.00
- 45 Stratigraphy and Ostracoda of the Cotton Valley Group, Northern Gulf Coastal Region,**
by F.M. Swain and E.G. Anderson, 1993, 150 pp.
Presents a comprehensive regional study of a major formal group in Mesozoic strata of northern coastal areas. Proposes several new stratigraphic names. Describes 40 genera and 87 species from the Cotton Valley and overlying Coahuila; of these, 9 genera, 1 subgenus, 44 species, and 4 subspecies are new. Proposes a new family. Three supplements are available as Open-file Series nos. 93–01, 93–02, and 93–03. \$50.00.
Note: The stratigraphy section of this report constitutes Volume 2 of E.G. Anderson's Folio Series No. 3, 1979. See Open-file Series No. 93-03 for an addenda.

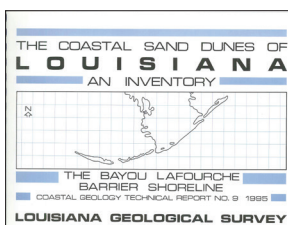
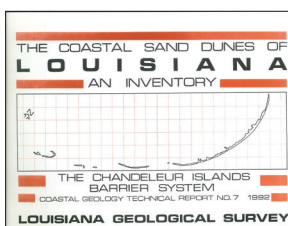
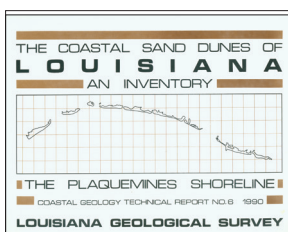
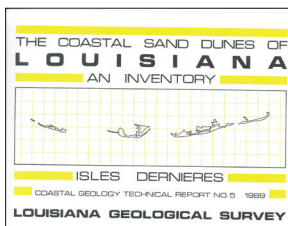
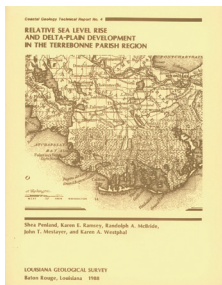
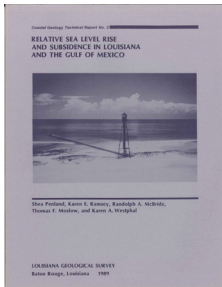
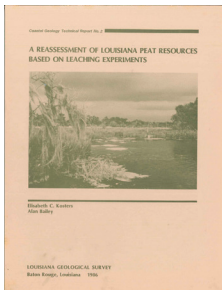
The Survey's Geological Pamphlets provide information on a number of geologic topics and are intended to be of general interest, providing a basic understanding of the subject.

Geological Pamphlets

- 1** Fluoride in the Ground Water of Avoyelles and Rapides Parishes, Louisiana,
by J.C. Maher, 1939, 23 pp.
Discusses the presence of fluoride and some other constituents in ground water from the Miocene formations and overlying sediment. Out of print (photocopy available) \$10.00
- 2 Preliminary Report on Ground-Water Conditions at Alexandria, Louisiana,**
by J.C. Maher, 1940, 54 pp.
Discusses geology and water-bearing properties of the Miocene, Pleistocene, and Holocene series, including artesian conditions. \$10.00

- 3 **Louisiana Lignite,**
by D. Pope Meagher and L.C. Ayccock, 1942, 56 pp.
Locates and describes all known lignite outcrops; describes 48 localities (general location map included). Special emphasis on Dolet Hills of DeSoto Parish. \$10.00
- 4 **Subsurface Study of the Delhi Area, Franklin and Richland Parishes, Louisiana,**
by P.A. Bloomer Jr., 1946, 47 pp.
Discusses stratigraphic producing zones, structure, and geological history of Delhi, West Delhi, and Big Creek oil fields. Out of print (photocopy available) \$10.00
- 5 **Louisiana Midway-Wilcox Correlation Problems,**
by C.O. Durham Jr. and C.R. Smith, 1958, 17 pp.
Presents workable nomenclature for surface and subsurface Midway-Wilcox sequence in Louisiana and the Gulf Coast area. \$10.00
- 6 **The Nature and Evolution of Salt Domes and Their Caprock,**
by J.D. Martinez, 1980, 16 pp.
Briefly discusses salt structures, internal deformation patterns, cap rock, utilization of salt domes, and needed research and planning. \$15.00
- 7 **Observations and Significance of Sinkhole Development at Jefferson Island,**
by W.J. Autin, 1984, 75 pp.
Assesses the geology of Jefferson Island and its relationship to the collapse sinkhole that developed on 20 November 1980. \$15.00
- 8 **Geology of the Chestnut Salt Dome Area, Natchitoches Parish, Louisiana,**
by R.F. Dinnean, 1958, 9 pp.
Geological Summary No. 1. Out of print (photocopy available) \$10.00
- 9 **Geological and Hydrological Report of Cross Lake Bridge Location, Shreveport I-220,**
by L.W. Hough, 1970, 4 pp. Out of print
- 10 **Analyses of Oil Field Brines from Claiborne Parish,**
by L.W. Hough and C.G. King, 1972, 11 pp. \$10.00
- 11 **Geology and History of the Belle Isle Salt Mine, the Southernmost Five Islands Salt Dome, St. Mary Parish, Louisiana,**
by D.H. Kupfer, 1998, 31 pp. plus appendix.
An in-depth discussion of the mine with a diagram of the mine structure and a detailed map of its workings, minerals, and structural and surface geology. \$15.00
- 12 **Revision of the American Otolith-based Fish Species Described by Koken in 1888,**
by Dirk Nolf, 2003, 19 pp. \$15.00
- 13 **Late Eocene (Priabonian) Fish Otoliths from the Yazoo Clay at Copenhagen, Louisiana,**
by D. Nolf and G.L. Stringer, 2003, 23 pp. \$15.00
- 14 **Geology of the Ville Platte, Louisiana Quadrangle (To Accompany the Ville Platte 30 x 60 minute Geologic Quadrangle),**
by R.P. McCulloh, P.V. Heinrich and J.I. Snead, 2003, 11 pp. \$15.00
- 15 **Paleoenvironments, Depositional History, and Alternate Reference Sections for the Wilcox Group (Paleocene-Eocene) of Northwest Louisiana-East Texas**
by L.N. Glawe and D.E. Bell, 2016, 8 pp. \$15.00



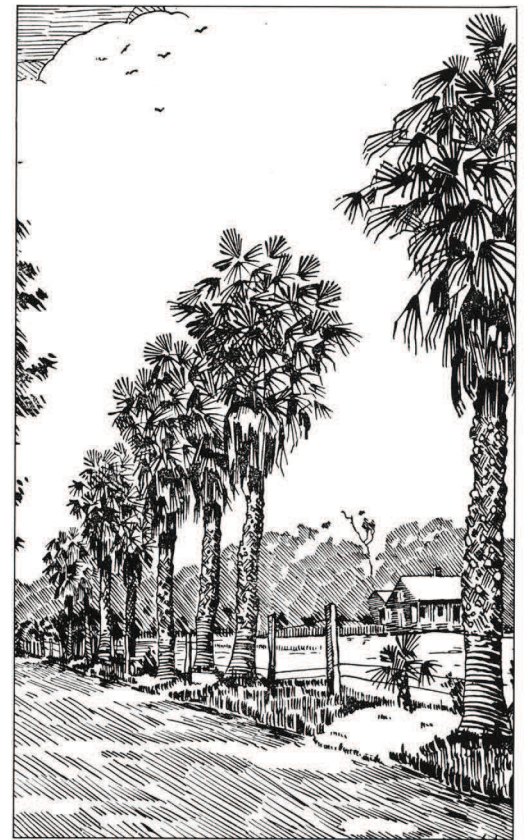


Coastal Geology Technical Reports

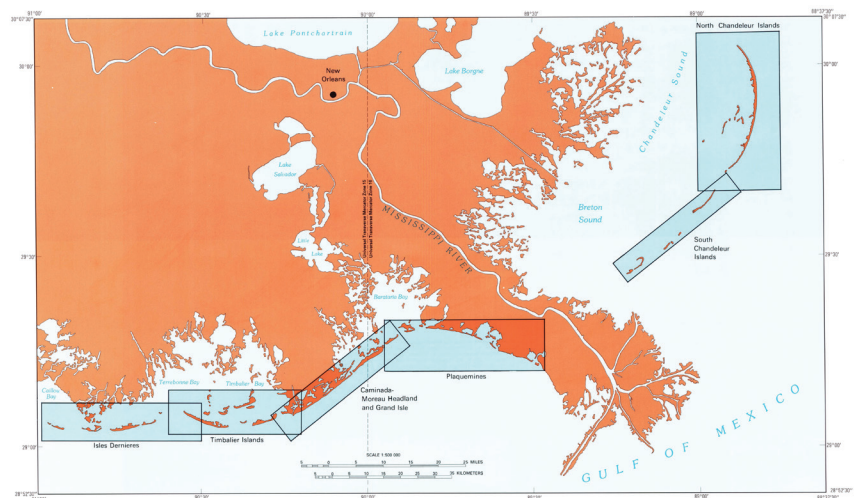
- 1 **Coastal Structures in Louisiana's Barataria Bight,**
by J. Mossa, S. Penland, and T.F. Moslow, 1985, 28 pp.
Describes the effects different structures have had on different stretches of the South Louisiana barrier coastline. \$15.00
- 2 **A Reassessment of Louisiana Peat Resources Based on Leaching Experiments,**
by E.C. Kesters and A. Bailey, 1986, 108 pp.
Evaluates South Louisiana peats for their potential for industrial use and for their soluble salts. \$15.00
- 3 **Relative Sea Level Rise and Subsidence in Louisiana and the Gulf of Mexico,**
by S. Penland, K.E. Ramsey, R.A. McBride, T.F. Moslow, and K.A. Westphal, 1989, 65 pp.
Analyses of two tide gage networks in Louisiana and the northern Gulf of Mexico. \$30.00
- 4 **Relative Sea Level Rise and Delta-Plain Development in the Terrebonne Parish Region,**
by S. Penland, K.E. Ramsey, R.A. McBride, J.T. Mestayer, and K.A. Westphal, 1988, 121 pp.
Data from tide gage stations, from geodetic leveling surveys, from vibracore sampling, and from carbon-14 measurements. \$30.00
- 5 **Coastal Sand Dunes of Louisiana: An Inventory. Isles Dernieres,**
by W. Ritchie, K. Westphal, R.A. McBride, and S. Penland, 1989, 60 pp.
An inventory of the geomorphology, sediment, and vegetation of the islands; includes maps, profiles, and photographs. \$30.00
- 6 **Coastal Sand Dunes of Louisiana: An Inventory. The Plaquemines Shoreline,**
by W. Ritchie, K.A. Westphal, R.A. McBride, and S. Penland, 1990, 90 pp.
An inventory of the geomorphology, sediment, and vegetation of the islands; includes maps, profiles, and photographs. \$30.00
- 7 **Coastal Sand Dunes of Louisiana: An Inventory. The Chandeleur Islands,**
by W. Ritchie, K. Westphal, R.A. McBride, and S. Penland, 1992, 150 pp.
An inventory of the geomorphology, sediment, and vegetation of the islands; includes maps, profiles, and photographs. \$30.00
- 8 **Nearshore Sand Resources of the Mississippi River Delta Plain: Marsh Island to Sandy Point,**
by J.R. Suter, S. Penland, and K.E. Ramsey, 1991, 130 pp.
Louisiana's critical coastal erosion problem requires large quantities of sand from offshore deposits. To locate such deposits, geophysical and geotechnical surveys were conducted on the Louisiana continental shelf. \$30.00
- 9 **Coastal Sand Dunes of Louisiana: An Inventory. The Bayou Lafourche Barrier Shoreline,**
by W. Ritchie, K.A. Westphal, R.A. McBride and S. Penland, 1995, 200 pp.
An inventory of the geomorphology, sediment, and vegetation of the coastal headland and associated barrier islands; includes maps, plates, figures, profiles, photographs, and appendices. \$40.00

Maps and Atlases/Geologic Maps

- 1 **Fence Diagram of Louisiana Geology,**
by J.R. Rollo, 1960
scale 1 in. = 18 mi., multicolored, sheet size 18 x 14 in. Out of print. (Available only as Plate 2 in Water Resources Bulletin No. 1.) Digital \$15.00
- 2 **Composite Age Tectonic Map, Gulf Basin Province,**
by E.G. Anderson, 1979
scale 1:5,000,000, multicolored, sheet size 26 x 26 in. Also available as front piece in Folio Series No. 3. \$15.00
- 3 **Recent Geologic Flood-Plain Deposits of Louisiana,**
compiled by R.P. McCulloh and R.A. Bradley, 1982
scale 1:500,000, one color, sheet size 44 x 42 in. Out of print
- 4 **Intrastate Gas Pipeline Map,**
compiled by E.L. McGehee Jr., 1983, scale 1:500,000,
full color, sheet size 43 x 40 in. \$20.00
- 5 **Geologic Map of Louisiana,**
compiled by J.I. Snead and R.P. McCulloh, 1984
scale 1:500,000, multicolored, sheet size 44 x 42 in. \$30.00
- 6 **South Louisiana Geopressed Tertiary Sandstones,**
by R.P. McCulloh, E.C. Kusters, and M.A. Pino, 1984
scale 1:500,000, black and white, sheet size 21 x 42 in. \$20.00
- 7 **Quaternary Geology of the Lower Mississippi Valley,**
compiled by R.T. Saucier and J.I. Snead, 1989
scale 1:1,000,000, sheet size 31 x 35 in. \$20.00
- 8 **Aeromagnetic Anomaly Map of Louisiana,**
compiled by M.T. Angelich and R.H. Pilger Jr., 1990
scale 1:500,000, multicolored, sheet size 40 x 43 in. \$25.00
- 9 **Bouguer Gravity Map of Louisiana,**
compiled by M.T. Angelich, R.H. Pilger Jr. and G.R. Keller, 1990
scale 1:500,000, multicolored, sheet size 40 x 43 in. \$25.00
- 10 **Historical Shoreline Change in the Northern Gulf of Mexico,**
compiled by K.A. Westphal, M.W. Hiland and R.A. McBride, 1991
scale 1:2,000,000, sheet size 26 x 40 in. Out of print. Digital \$25.00
- 11 **Shoreline Changes of the Isles Dernieres
Barrier Island Arc, Louisiana, From
1853–1989,**
compiled by R.A. McBride, S. Penland,
B. Jaffe, S.J. Williams, A.H. Sallenger and
K.A. Westphal, 1991
scale 1:75,000, sheet size 37 x 49 in. \$20.00
- 12 **Louisiana Barrier Island Study—Atlas of Shoreline
Changes in Louisiana from 1853–1989,**
S.J. Williams, S. Penland, and A.H. Sallenger,
eds., 1992, 104 pp.
Describes the geologic framework of the
Mississippi River delta plain and the processes
affecting its evolution and cultural history.
Barrier systems discussed are Isles Dernieres, Bayou
Lafourche, Plaquemines, and Chandeleur. Out of print



Palm-lined Ludwig's Lane on Grand Isle, ca. 1933: (Pen and ink postcard drawing by George Izvolsky).



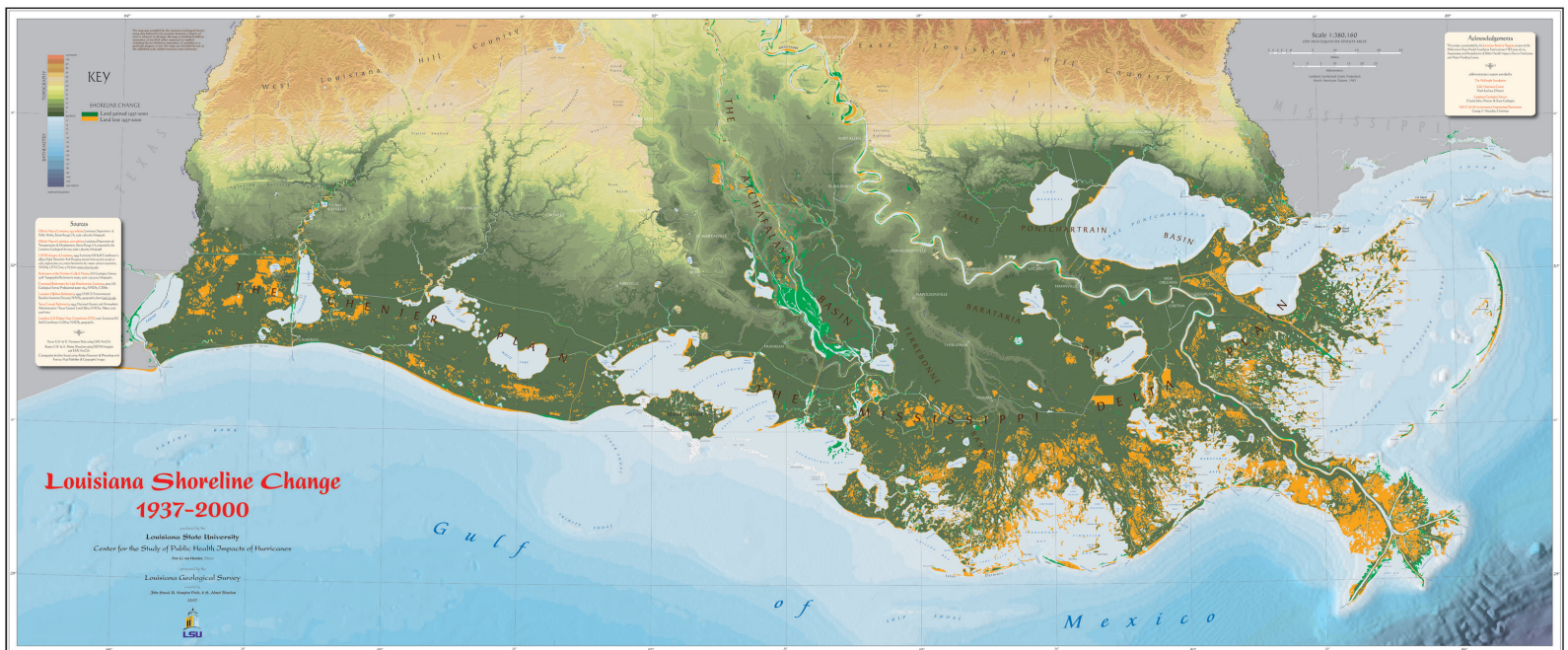


13 The Atchafalaya Basin, 2004,
 compiled by Lisa Pond, John Snead, and Robert Paulsell,
 scale 1:100,000, multicolored, double-sided sheet size 32 x 40 in.
 Map depicts public lands and boat landings located in the basin on a detailed
 base with state and U.S. highways. The reverse side features a satellite image
 of the basin in full color. Available rolled, \$20.00 or folded, \$15.00.

14 Louisiana Shoreline Change 1937-2000,
 by John Snead, R. Hampton Peele, and Ahmet Binselam, 2008,
 26 X 60 in. Multicolored thematic physical relief map.
 Scale 1:380,160. \$25.00

The following Parish Geological Maps from previous bulletins are now available in digital (pdf) form. \$15 each.

- Catahoula and Concordia**
- Grant and LaSalle**
- Caldwell and Winn**
- Avoyelles and Rapides**
- Vernon**
- DeSoto and Red River**
- Beauregard and Allen**
- Ouachita**
- Webster**
- Evangeline and St. Landry**
- Sabine**
- Acadia and Jefferson Davis**
- Bossier**
- Natchitoches**



Parish Geologic Maps

scale 1:62,500, full color, available only in parish geological bulletins. Not available for all parishes; check parish index listing for underlined bulletin number. Maps sold separately only for Bossier (\$20.00) and Natchitoches (\$25.00) parishes.

Discontinued 15-minute U.S. Geological Survey (USGS) quadrangle maps, scale 1:62,500, are available for the following listed localities. \$10.00 per sheet

Note: LGS is no longer an outlet for the current USGS topographic maps (1:24,000) and the USGS parish maps (1:50,000). These products may be purchased from the Louisiana Department of Transportation and Development in Baton Rouge (telephone (225) 379-1107).

Abbeville

Amite

Arcadia

Ashland

Barataria

Basile

Baskinton

Bastrop

Baton Rouge

Bayou Du Large

Bernice

Bienville

Black Bay

Bossier City

Boyce

Breton Sound

Buckeye

Bunkie

Calvin

Castor Creek

Chatham

Cheniere Au Tigre

Chopin

Clinton

Colfax

Collinston

Constance Bayou

Coushatta

Covington

Crowley

Cut Off

Davis Island

Denham Springs

Donaldsonville

East Delta

Elizabeth

Empire

Eunice

Eva

Felixville

Folsom

Fort Polk

Gibsland

Gibson

Goldonna

Grosse Tete

Hodge

Jeanerette

Jena

Jennings

Kisatchie

Kinder

Lafayette

Lake Charles

Lake Chicot

Lake Felicity

Leesville

Lecompte

Locust Ridge

Logansport

Loreauville

Mangham

Many

Marksville

Marsh Island

Minden

Mitchiner

Monroe, north & south

Monterey

Moreauville

Mooringsport

Mt. Airy

Mt. Hermon

Negreet

New Roads

Oakdale

Oberlin

Olla

Opelousas

Orange

Pecan Island

Palmetto

Plain Dealing

Pleasant Hill

Pointe a la Hache

Pollock

Reeves

Ringgold

Ruston

St. Francisville

St. Joseph

Sarepta

Sikes

Springfield

Starks

Sugartown

Summerfield

Sun

Talla Bena

Thibodaux

Tullos

Turkey Creek

Venice

Ville Platte

Vivian

Waverly

Welsh

West Delta

White Castle

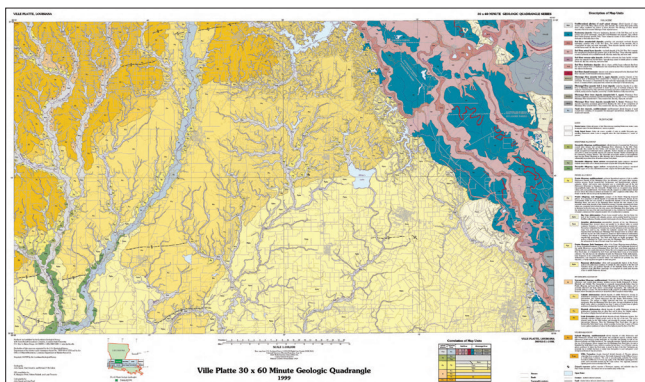
Winnfield

Yscloskey

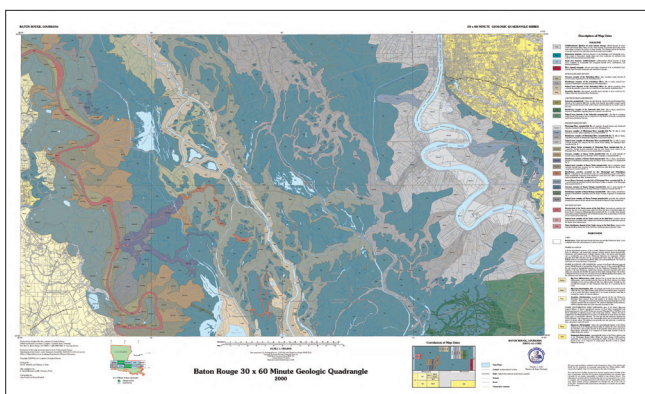
Zachary

Each multicolored 1:100,000 Geologic Quadrangle describes and illustrates the surficial geology of the quadrangle. \$20.00 per map.

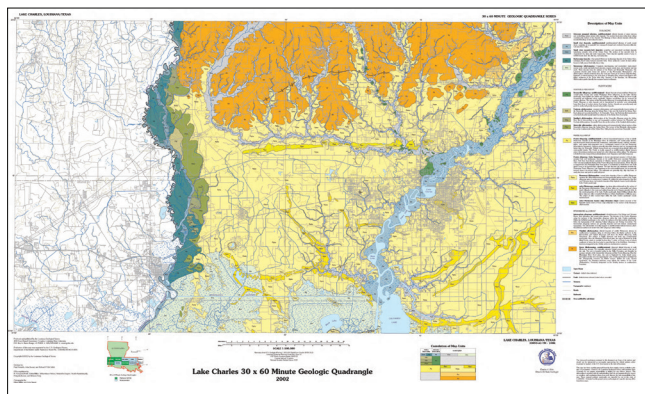
- 1 **The Ville Platte Geologic Quadrangle, 1999,**
by John Snead, Paul Heinrich, and Richard P. McCulloh.



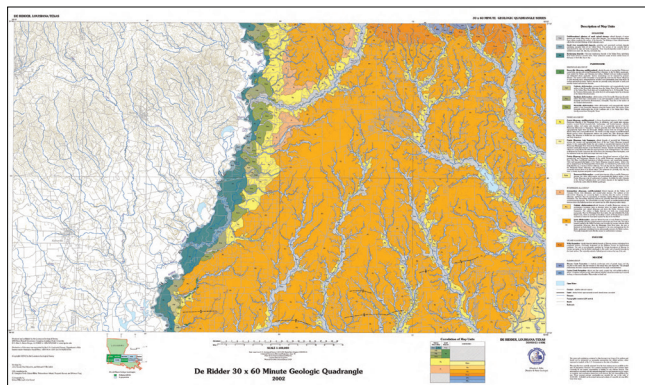
- 2 **The Baton Rouge Geologic Quadrangle, 2000,**
by Paul V. Heinrich and Whitney J. Autin.

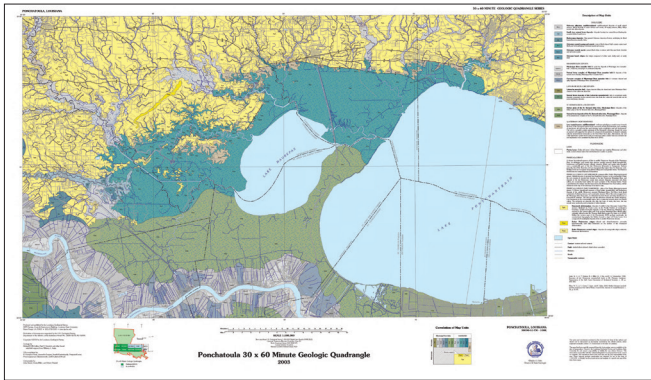


- 3 **The Lake Charles Geologic Quadrangle, 2002,**
by Paul V. Heinrich, John Snead and Richard McCulloh.

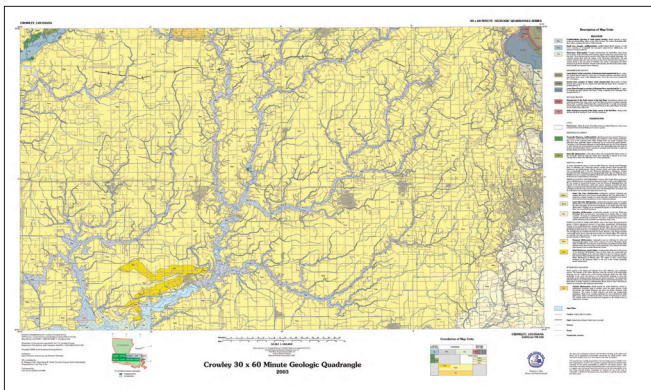


- 4 **The DeRidder Geologic Quadrangle, 2002,**
by John Snead, Paul V. Heinrich, and Richard McCulloh.

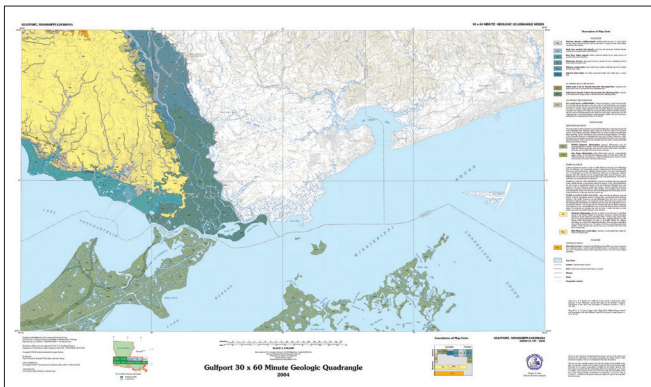




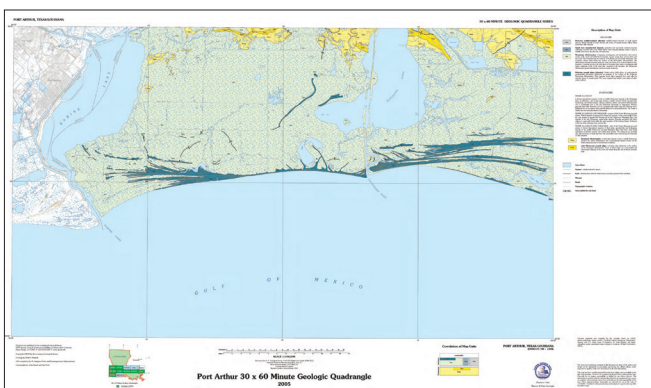
- 5 **The Ponchatoula Geologic Quadrangle, 2003,**
by Richard McCulloh, Paul V. Heinrich, and
John Snead, with field support from Whitney Autin.



- 6 **The Crowley Geologic Quadrangle, 2003,**
by Paul V. Heinrich, John Snead, and Richard McCulloh.

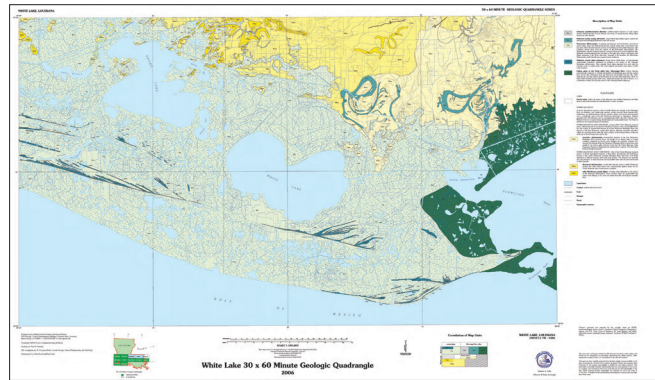


- 7 **The Gulfport Geologic Quadrangle, 2004,**
by Paul V. Heinrich, Richard McCulloh, and John Snead.

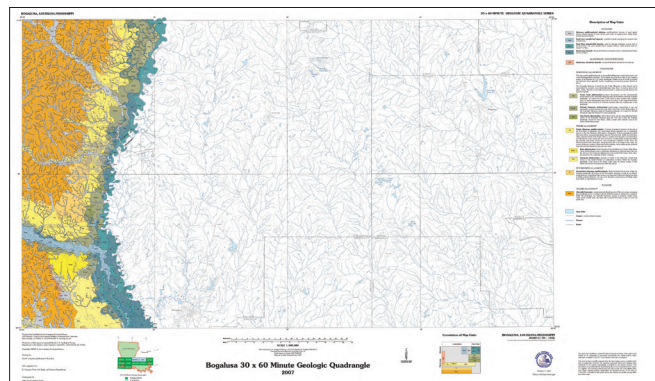


- 8 **The Port Arthur Quadrangle, 2005,**
by Paul V. Heinrich.

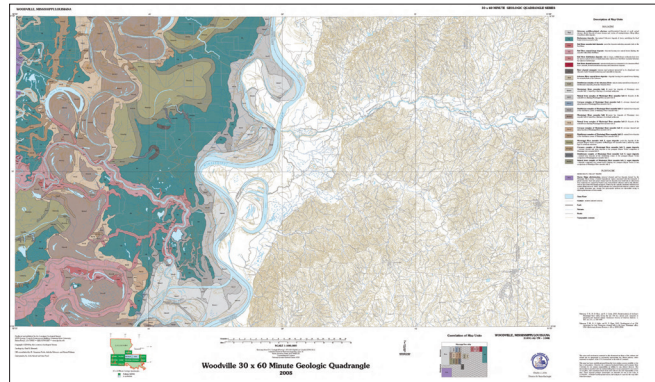
- 9 **The White Lake Geologic Quadrangle, 2006,**
by Paul V. Heinrich.



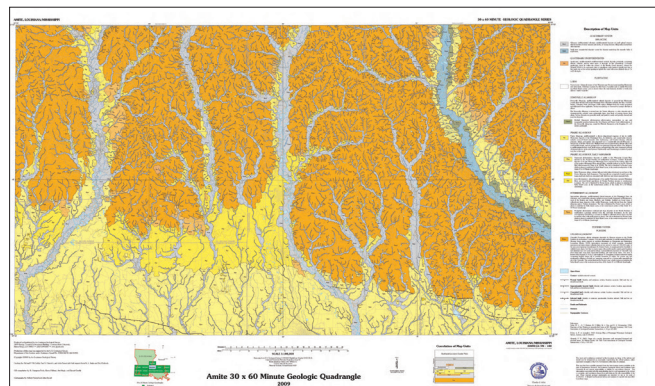
- 10 **The Bogalusa Geologic Quadrangle, 2007,**
by Paul V. Heinrich, Richard McCulloh, and John Sneed.

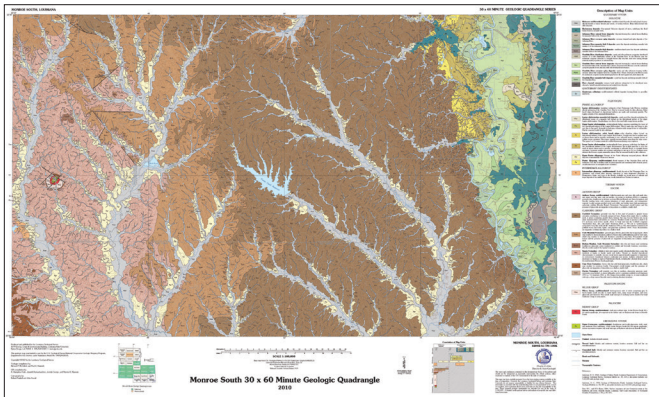


- 11 **The Woodville Geologic Quadrangle, 2008,**
by Paul V. Heinrich.

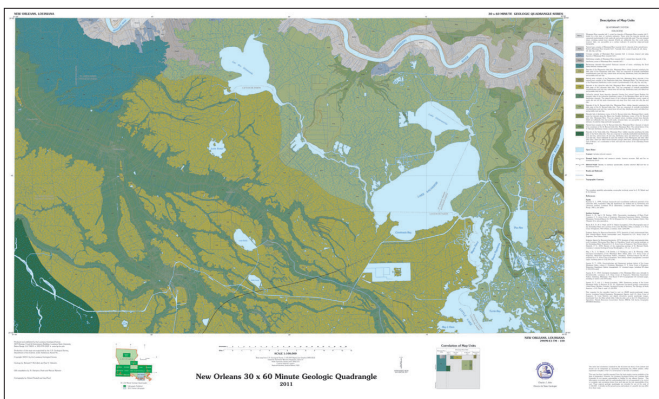


- 12 **The Amite Geologic Quadrangle, 2009,**
by Richard P. McCulloh, Paul V. Heinrich, and John Sneed.

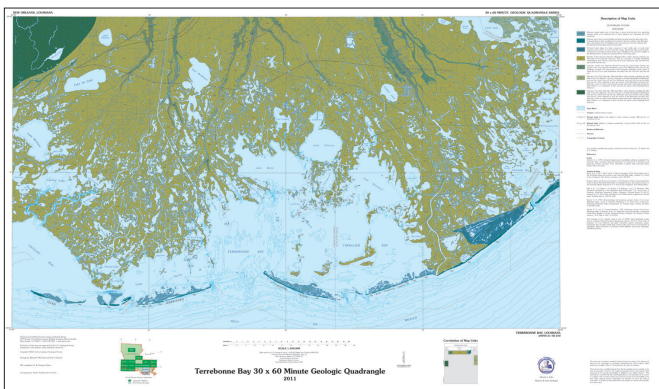




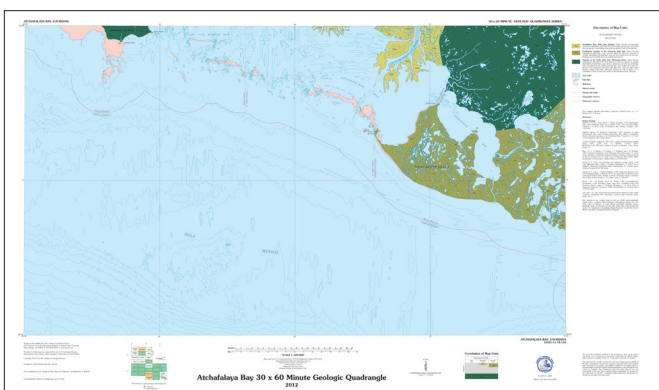
13 **The Monroe South Geologic Quadrangle, 2010,**
by McCulloh, R. P and P. V. Heinrich.



14 **The New Orleans Geologic Quadrangle, 2010,**
by McCulloh, R. P and P. V. Heinrich.

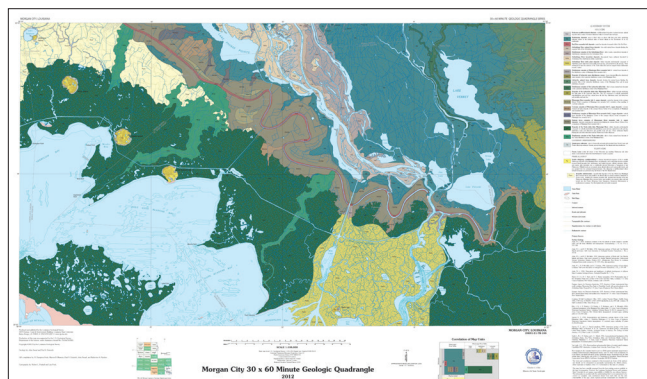


15 **The Terrebonne Bay Geologic Quadrangle, 2010,**
by McCulloh, R. P and P. V. Heinrich.

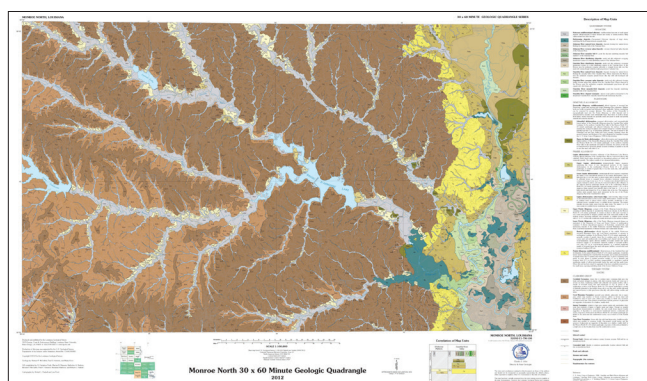


16 **The Atchafalaya Bay Geologic Quadrangle, 2012,**
by Heinrich, P. V., and J. Snead.

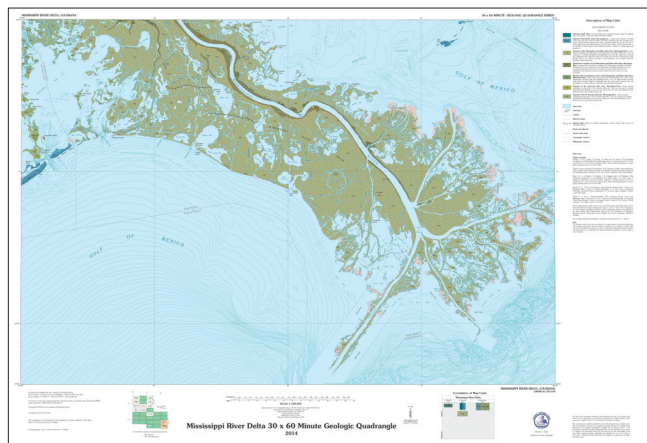
- 17 **The Morgan City Geologic Quadrangle, 2012,**
by Snead, J., and P. V. Heinrich.



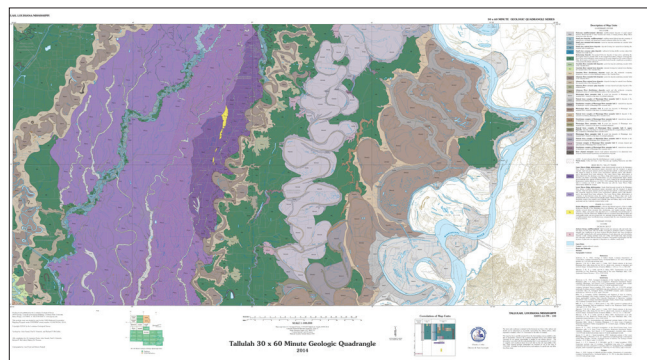
- 18 **The Monroe North Geologic Quadrangle, 2012,**
by McCulloh, R. P., P. V. Heinrich, and M. Horn.

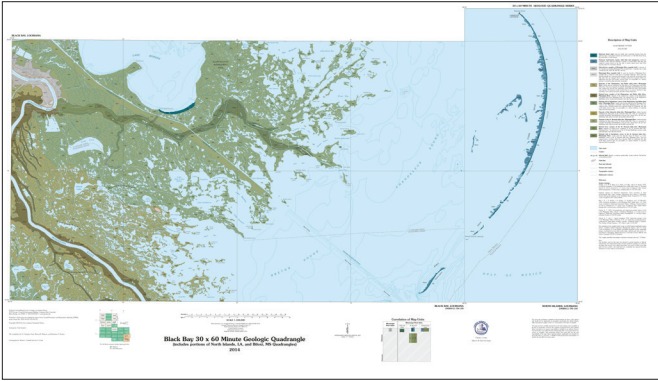


- 19 **The Mississippi River Delta Geologic Quadrangle, 2014,**
by Heinrich, P. V.

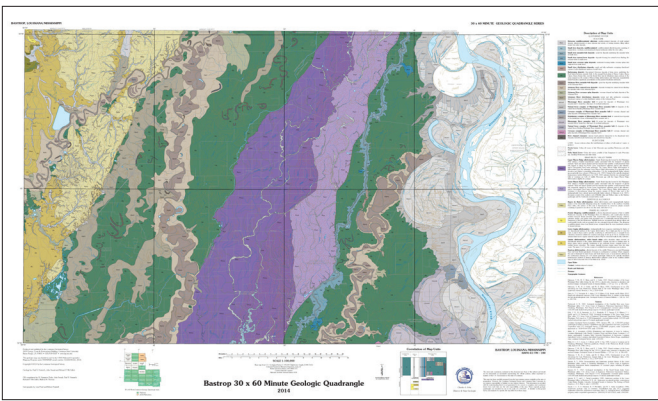


- 20 **The Tallulah, Louisiana/Mississippi Quadrangle, 2014,**
by Snead, J., Heinrich, P. V., and R. P. McCulloh.

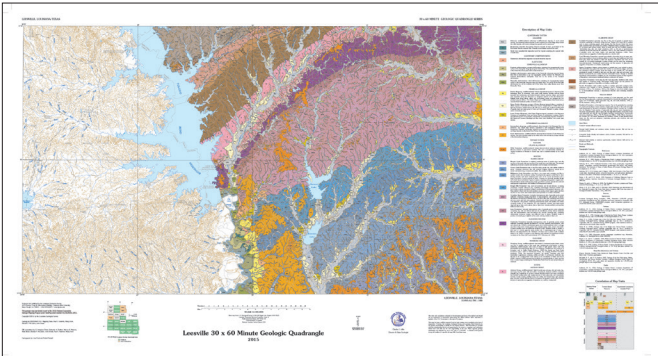




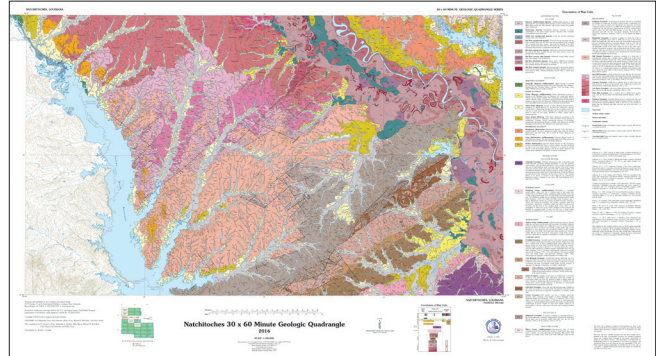
21 **The Black Bay Geologic Quadrangle, 2014,**
by Heinrich, P.V.



22 **The Bastrop Geologic Quadrangle, 2015,**
by Heinrich, P. V.; J. Snead, and R. P. McCulloh.



23 **The Leesville Geologic Quadrangle, 2015,**
by Heinrich, P. V.; M. Horn, R. P. McCulloh, and J. Snead.



24 **The Natchitoches Geologic Quadrangle, 2016,**
by Heinrich, P. V.; M. Horn, R. P. McCulloh, and J. Snead.

Geologic Quadrangle Maps (1:24,000)

GQ-1 Geologic Map of the Fort Polk Area, Vernon Parish, Louisiana, 1998,
by David J. Hinds, scale 1:24,000, multicolored, digitally produced, sheet size 28 x 36 in.
Includes one dip-oriented structure section at 10x vertical exaggeration. \$30.00

GQ-2 Geologic Map of the Slagle Area, Vernon Parish, Louisiana, 1998,
by David J. Hinds, scale 1:24,000, multicolored, digitally produced, sheet size 33x36 in.
Includes one dip-oriented structure section at 10x vertical exaggeration. \$30.00

Mineral Resources Maps

- 1 **Map of Louisiana, Showing Oil, Gas and Sulphur Fields, Salt Domes, etc., rev. 1938,**
by J.H. McGuiert and M.B. Stephenson,
scale 1:500,000, black and white.
Out of print
- 2 **Louisiana Salt Domes, 2000,**
scale 1 in. = 50 mi, black and white.
(Available for free inside Public Information Series #1)
- 3 **Oil and Gas Fields of Louisiana 2008,**
by Brian Harder and Asheka Rahman, 2008,
54 X 60 in. Multicolored oil and gas field wall map with metal hanging strips. Scale 1:380,160. \$50.00
- 4 **Mineral Resources Map of Louisiana,**
compiled by Paul V. Heinrich and Richard P. McCulloh, 1999,
scale 1:500,000, multicolored, sheet size 40 x 44 in.
Shows with a combination of polygons and iconic symbols the occurrences of industrial and nonfuel minerals of potential economic significance. \$50.00

Open-File Geologic Quadrangle Maps

LGS does not stock Open-File Geologic Quadrangle Maps. 1:24,000 scale (7½-minute) maps are 24 X 36-inch sheets. 1:100,000 scale (30 X 60-minute) maps are 28 X 48-inch sheets. Due to data compilation and printing processes, please allow 2-4 weeks for delivery. \$55 each.

1:24,000

Map Number	Name
2000-01	Scotlandville
2000-02	Baton Rouge West
2000-03	Baton Rouge East
2001-01	Comite
2001-02	Denham Springs
2001-03	St. Tammany
2001-04	Hickory
2001-05	Lacombe
2002-01	Aimwell
2002-02	Harrisonburg
2002-03	Sicily Island
2002-04	Mandeville
2002-05	Haaswood
2002-06	Slidell
2003-01	Alexandria
2003-02	Ball
2003-03	Bush
2003-04	Industrial
2004-01	Rock Hill
2004-02	Rapides
2004-03	Green Gables
2004-04	Libuse
2005-01	West Monroe South
2005-02	Monroe South
2005-03	Luna
2005-04	Bosco
2006-01	Mooringsport
2006-02	Blanchard
2007-01	Port Hudson
2007-02	Zachary
2007-03	Fred
2008-01	Hatchersville
2008-02	Greensburg
2009-01	Ashland
2009-02	Fryeburg
2009-03	North Highlands
2015-01	Buhler
2015-02	Moss Bluff
2015-03	Westlake

1:100,000

Map Number	Name
2004-05	Alexandria
2006-03	Shreveport North
2007-04	New Roads
2009-04	Shreveport South
2012-03	Natchez
2012-02	Winnfield
2013-01	Natchitoches

Water Resources Maps

Plate 1. Citronelle Formation Outcrop,

compiled by D.P. Boniol and B.C. Hanson, 1985,
Scale 1:250,000, multicolored,
sheet size 36 x 36 in. \$13.00

Plate 3. Land Use and Land Cover,

compiled by D.P. Boniol and B.C. Hanson, 1985,
Scale 1:250,000, multicolored,
sheet size 36 x 36 in. \$13.00

Plate 4. Soils Recharge Potential,

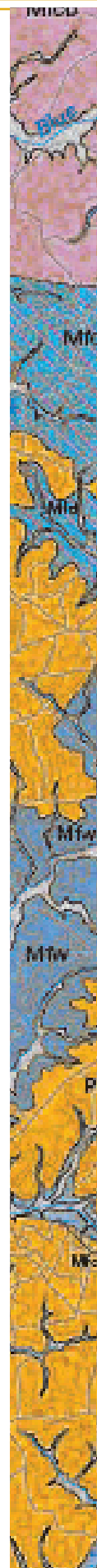
compiled by W.J. Autin,
D.P. Boniol, B.C. Hanson, 1985,
multicolored, sheet size 36 x 36
in. \$13.00

Plate 5. Potential Risk to Ground Water,

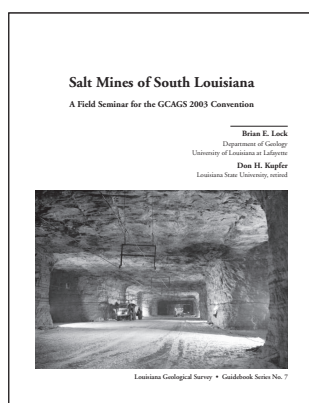
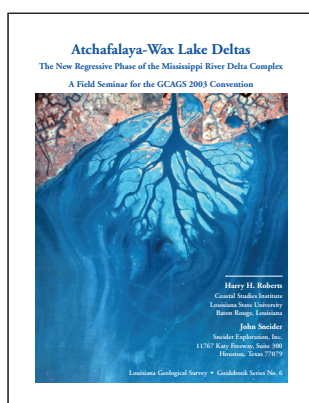
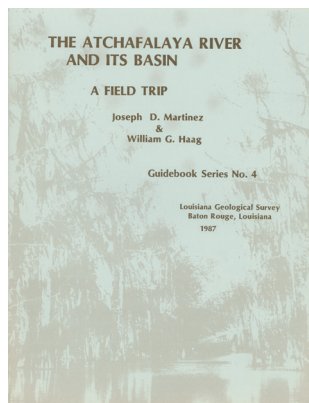
compiled by D.P. Boniol and B.C. Hanson, 1985,
scale 1:250,000, multicolored,
sheet size 36 x 36 in. \$13.00

Folio Series

- 1 **Paleontology of the L.L. & E. et al., Well Unit 1-L,**
by E.A. Butler, 1960,
4 sheets, sheet size 16 x 28 in.. Represents and correlates electric log of this well, located on Lake Washington dome, Plaquemines Parish, with drawings of significant faunal assemblages. \$15.00
- 2 **St. John's Bentonite Report, Claiborne Parish, Louisiana,**
by C.O. Durham Jr. and others, 1962,
One 24 x 18-in. folded sheet. Maps bentonite area and discusses geology, occurrence, and reserves. \$10.00
- 3 **Basic Mesozoic Study in Louisiana, the Northern Coastal Region, and the Gulf Basin,**
by E.G. Anderson, 1979,
58 pp. (size 32 x 25 in.) Establishes the northern gulf coastal region as a sedimentary-stratigraphic entity. Presents a set of Mesozoic units adapted from current usage to best fit the region, with representative sections for each unit; a stratigraphic grid extending over the Mesozoic shelf to facilitate use of the units; and a tectonic frame work showing major structural elements that affected sedimentation on the Mesozoic shelf. \$50.00
- 4 **Parish Atlas of Louisiana Oil and Gas Fields,**
compiled by C.P. Stanfield, E.L. McGehee, J.I. Snead, E.B. Millet, and E.L. Nichols, 1980, 85 pp.
Size 8 x 11 in. Delineates onshore oil and gas fields discovered through 31 December 1980; also, nonproducing salt domes. Out of print (photocopy available) \$15.00
- 5 **Regional Cross Sections, Louisiana Gulf Coast, Western Part,**
by D.G. Bebout and D.R. Gutierrez, 1982, 11 pp.
Size 19 x 22 in. Covers an area extending from the Sabine River on the west to Pointe Coupee, St. Martin, and Iberia parishes on the east; to the north, the sections extend above the deeply buried Lower Cretaceous shelf margin. \$25.00
- 6 **Regional Cross Sections, Louisiana Gulf Coast, Eastern Part,**
by D.G. Bebout and D.R. Gutierrez, 1983, 10 pp.
Size 25 x 22 in. Covers an area extending from West Feliciana, Pointe Coupee, St. Martin, Iberia, and St. Mary parishes on the west to the Louisiana-Mississippi state line on the east. \$25.00
- 7 **Regional Cross Sections, North Louisiana,**
by L.G. Eversull, 1984, 10 pp.
Size 28 x 21 in. Covers an area extending from Caddo, De Soto, and Sabine parishes on the west to West Carroll, Franklin, Concordia, and Avoyelles parishes on the east and from the Arkansas-Louisiana boundary on the north to Township 1 on the south. \$25.00
- 8 **Stratigraphic Charts of Louisiana,**
by John E. Johnston III, Paul V. Heinrich, John K. Lovelace, Richard P. McCulloh, and Ronald K. Zimmerman, 2000.
Available for free on our website at www.lgs.lsu.edu. Hard copy 24 x 36 in. \$25.00



Guidebook Series



- 1 **Engineering Geology of the Jefferson Island Event—November 20, 1980,**
by W.J. Autin, 1982, 30 pp.
Discusses the surficial processes of mass movement associated with the catastrophic mine inundation. \$15.00
- 2 **Geopressed-Geothermal Energy Resource Appraisal: Hydrogeology and Well Testing Determine Producibility,**
by R.H. Wallace Jr., ed., 1982, 111 pp.
A collection of papers discussing regional and local geology, production well design and operation, surface equipment for gas separation and resource testing; disposal well design and operation, environmental monitoring, and test results for the Technadril-Fenix & Scisson-DOE Gladys McCall No. 1 Well in Cameron Parish. \$20.00
- 3 **Transgressive Depositional Environments of the Mississippi River Delta Plain: A Guide to the Barrier Islands, Beaches, and Shoals in Louisiana,**
by S. Penland and R. Boyd, eds., 1985, 233 pp.
Presents a collection of papers describing the Holocene geology, geomorphology, and morphodynamics of Louisiana's coastal barrier systems. \$30.00
- 4 **The Atchafalaya River and Its Basin: A Field Trip,**
by J.D. Martinez and W.G. Haag, 1987, 22 pp.
This 285-mile automobile loop begins and ends on the campus of Louisiana State University in Baton Rouge. A carefully calibrated mileage chart alerts the traveler to bayous, plantation homes, Indian mounds, and Civil War sites, oil and gas fields, chemical plants, and many natural features that influence the Atchafalaya River and basin. \$15.00
- 5 **Quaternary Geomorphology and Stratigraphy of the Florida Parishes, Southeastern Louisiana: A Field Trip,**
by J. Mossa and W.J. Autin, eds., 1989, 98 pp.
Synthesizes concepts of the number, distribution, and mapping of Quaternary surfaces in the Florida Parishes of southeastern Louisiana. Ten sites are analyzed in detail. \$20.00
- 6 **Atchafalaya-Wax Lake Deltas (The New Regressive Phase of the Mississippi River Delta Complex), A Field Seminar for the CGAGS 2003 Convention,**
by H.H. Roberts and J. Snedler, 2003, 68 pp. \$20.00
- 7 **Salt Mines of South Louisiana, A Field Seminar for the CGAGS 2003 Convention,**
by B.E. Lock and D.H. Kupfer, 2003, 85 pp. \$20.00

Anthropological Studies Series

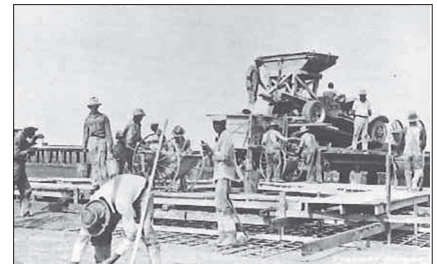
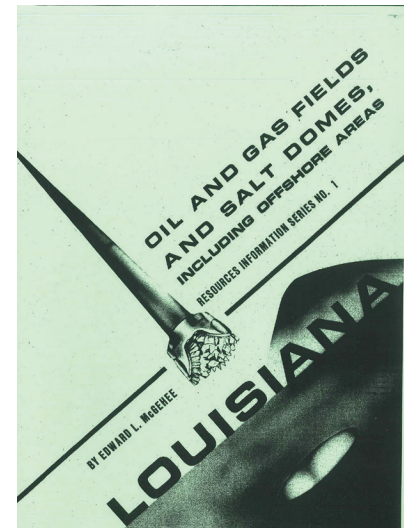
- 1 **Ceramic Decoration Sequence at an Old Indian Village Site near Sicily Island, Louisiana,**
by J.A. Ford, 1935, 41 pp. \$20.00
- 2 **Analysis of Indian Village Site Collections from Louisiana and Mississippi,**
by J.A. Ford, 1936, 285 pp. \$25.00
- 3 **Crooks Site, A Marksville Period Burial Mound in La Salle Parish, Louisiana,**
by J.A. Ford and G.R. Willey, 1940, 148 pp. \$25.00
- 4 **A Bibliography Relative to Indians of the State of Louisiana,**
by R.W. Neuman and L.A. Simmons, 1969, 72 pp. \$25.00
- 5 **The Kleinpeter Site (16EBR5): The History and Archaeology of a Multicomponent Site in East Baton Rouge Parish, Louisiana,**
by Dennis Jones, Carl Kuttruff, Malcolm Shuman, and Joe Stevenson, 1994, 228 pp. \$35.00

Paleontological Studies

- 1 **Miocene-Upper Oligocene Foraminifera of Louisiana (Paleontological Studies, Vol. 1, Pt. 1),**
by E.A. Butler, 1959, 35 pp. \$15.00
Note: Paleontological Study No. 2 has been recategorized and is listed as Geological Bulletin No. 45.

Resources Information Series

- 1 **Oil and Gas Fields and Salt Domes, Including Offshore Areas,**
compiled by E.L. McGehee Jr., 1983, 164 pp.
Lists field names, their abbreviations, and codes; discovery dates; locations; and types of production. Includes map with list of salt domes; generalized geologic map; and a composite columnar section of Louisiana. \$20.00
- 2 **Bibliography and Index of Theses and Dissertations on the Geology of Louisiana,**
compiled by M.J. Nault, 1980, 36 pp.
Lists 334 theses and dissertations on Louisiana geology completed through December 1979. Titles indexed by subject-geologic time, keyword, parish, stratigraphy and salt dome, subsurface oil and gas field or area, and chronology. Also includes a generalized geologic map, and a columnar section of Louisiana. Out of print (photocopy available) \$15.00
- 3 **Index, Oil and Gas Map of Louisiana, 1981,**
compiled by C.P. Stanfield, 1981, 178 pp.
Lists the names and addresses of oil, gas, and product transporters and gives the approximate diameter of pipelines in specific parishes. Cross-referenced by parish and offshore area. Includes salt dome and geologic maps and a composite columnar section of Louisiana. \$20.00
- 4 **Bibliography and Index of Louisiana Geology, 1961 to 1979,**
compiled by M.J. Nault and G.N. Rassam, 1981, 149 pp.
Includes 2,269 titles and a serials list. Each entry is indexed by subject, parish, and rock units. Includes a generalized geologic map, and a columnar section of Louisiana. \$15.00
- 5 **Enhanced Oil Recovery and Its Potential Application to Louisiana Reservoirs,**
by L.S. Durham and Associates, 1984, 116 pp.
Describes the enhanced recovery processes (thermal, chemical, miscible, and exotic) and discusses the use of this technology in the state. \$15.00
- 6 **1981 Inventory of the Utilization of Water-Source Heat Pumps in the Conterminous United States,**
by A.N. Turcan Jr., J.R. Bond, and G. Cambre, 1984, 42 pp. and appendixes.
The use of heat pumps, the disposal or reuse of processed water, problems with supply or return wells, and the development of guidelines. \$15.00
- 7 **History of Oil and Gas Development in Coastal Louisiana,**
by D.M. Lindstedt, L.L. Nunn, J.C. Holmes Jr., and E.E. Willis, 1991, 131 pp.
Traces the history of oil and gas development in Louisiana and summarizes the importance of the state's coastal zone in its overall production and leasing history. \$25.00
- 8 **Fire and Brimstone: The Melting of Louisiana's Sulphur,**
by Donald W. Davis and Randall A. Detro, 1992, 122 pp.
Describes the development of the industry and mines in Louisiana and explains those factors that have had major impacts on the sulphur industry in south Louisiana. \$25.00



Mineral Resources Bulletins

- 1 **Some Silica Sands of Southeast Louisiana,**
by H.L. Roland Jr., 1969, 65 pp. Out of print \$15.00
- 2 **Lignite—Evaluation of Near-Surface Deposits in Northwest Louisiana,**
by H.L. Roland Jr., G.M. Jenkins, and D.E. Pope, 1976, 39 pp. \$15.00
- 3 **Gamma Ray Surveys of Louisiana, Progress Report, 1971,**
by L.H. Dixon, 1978, 78 pp. \$15.00

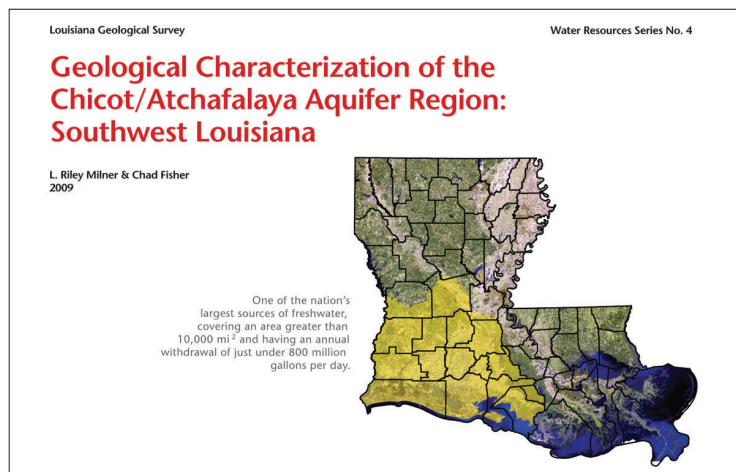
Clay Resources Bulletins

- 1 **Test Data and Evaluation of Miscellaneous Clays,**
by L.H. Dixon, 1967, 107 pp. \$15.00
- 2 **Occurrence, Test Data and Evaluation of Clay for Making Lightweight Aggregate,**
by L.H. Dixon and M.E. Tyrrell, 1969, 145 pp. \$15.00
- 3 **Occurrence, Test Data and Evaluation of Clay for Making Structural Clay Products,**
by L.H. Dixon and M.E. Tyrrell, 1972, 333 pp. \$20.00
- 4 **Clays of Louisiana, Shreveport Area,**
by J.W. Whittemore, 1927, 84 pp. Out of print (photocopy available) \$13.00

Water Resources Series

- 1 **Water-Level Trends in the Florida Parishes, Louisiana,**
by S.M. Haque, 1982, 34 pp.
Discusses and presents data for current and past groundwater level trends in selected observation wells in the area (hydrographs included). \$10.00
- 2 **Ground-Water Quality in the Lake Charles Area, Louisiana,**
by S.M. Haque, 1984, 57 pp.
Discusses the general geology, hydrology, and water quality of the Chicot Aquifer, the primary source of groundwater in this area. \$10.00
- 3 **Capital Area Recharge Region Study Based on Geologic and Hydrologic Studies in Southeastern Louisiana and Southwestern Mississippi,**
by B.C. Hanson and D.P. Doniol, 64 pp.
Discusses the Baton Rouge aquifer and its geologic relationships and sources of potential contamination to the recharge zone. Includes five Water Resources maps (Plates 1-5) (photocopy available) \$45.00
- 4 **Geological Characterization of the Chicot/Atchafalaya Aquifer Region: Southwest Louisiana,**

by L. Riley Milner and Chad Fisher, 2009, 39 pp. 11 X 17 in.
A characterization of the geology and groundwater resources of the Chicot/Atchafalaya aquifer region of southwest Louisiana. Includes current geologic interpretation, maps, and stratigraphic cross-sections. Available on CD for \$15.
Hard copy is \$60.00



Water Resources Bulletins

- 1 **Ground Water in Louisiana,**
by J.R. Rollo, 1960, map pack, 84 pp. \$20.00
- 2 **Ground-Water Conditions in the Baton Rouge Area, 1954-59, with Special Reference to Increased Pumpage,**
by C.O. Morgan, 1961, map pack, 78 pp. \$20.00
- 3 **Water Resources of Sabine Parish, Louisiana,**
by L.V. Page, R. Newcome Jr., and G.D. Graeff Jr., 1963, map pack, 146 pp. \$20.00
- 4 **Water Resources of Natchitoches Parish, Louisiana,**
by R. Newcome Jr., L.V. Page, and R. Sloss, 1963, map pack, 189 pp. \$20.00
- 5 **Water Resources of Bossier and Caddo Parishes, Louisiana,**
by L.V. Page and H.G. May, 1964, map pack, 105 pp. \$20.00
- 6 **Water Resources of Vernon Parish, Louisiana,**
by J.E. Rogers and A.J. Calandro, 1965, map pack, 104 pp. \$20.00
- 7 **Ground Water in the Geismar-Gonzales Area, Ascension Parish, Louisiana,**
by R.A. Long, 1965, 67 pp. \$15.00
- 8 **Water Resources of Rapides Parish, Louisiana,**
by R. Newcome Jr., and R. Sloss, 1966, 104 pp. \$20.00
- 9 **Ground-Water Resources of the Greater New Orleans Area, Louisiana,**
by J.R. Rollo, 1966, map pack, 69 pp. \$20.00
- 10 **Effects of Ground-Water Withdrawals on Water Levels and Salt-Water Encroachment in Southwestern Louisiana,**
by A.H. Harder and others, 1967, 56 pp. \$15.00
- 11 **Water Resources of Pointe Coupee Parish, Louisiana,**
by M.D. Winner and others, 1968, map pack, 110 pp. \$20.00
- 12 **Water Resources of the Lake Pontchartrain Area, Louisiana,**
by G.T. Cardwell and others, 1967, 105 pp. \$15.00
- 13 **Salt-Water Encroachment in Aquifers of the Baton Rouge Area, Louisiana,**
by J.R. Rollo, 1969, map pack, 45 pp. \$20.00
- 14 **Water Resources of Ouachita Parish, Louisiana,**
by J.E. Rogers, A.J. Calandro, and M.W. Gaydos, 1972, 118 pp. \$20.00
- 15 **Ground Water Resources of Avoyelles Parish, Louisiana,**
by James R. Marie, 1971, 70 pp. \$20.00
- 16 **Ground Water in the Plaquemine-White Castle Area, Iberville Parish, Louisiana,**
by C.D. Whiteman Jr., 1972, 69 pp. \$20.00
- 17 **Water Resources of Union Parish, Louisiana,**
by J.L. Snider, A.J. Calandro and W.J. Shampine, 1972, 68 pp. \$20.00
- 18 **Ground Water Resources of the Norco Area, Louisiana,**
by R.L. Hosman, 1972, 61 pp. \$20.00
- 19 **Ground Water Resources of Morehouse Parish, Louisiana,**
by T.H. Sanford Jr., 1972, 90 pp. \$20.00
- 20 **Geohydrology of the Evangeline and Jasper Aquifers of Southwestern Louisiana,**
by M.S. Whitfield Jr., 1975, 72 pp. \$20.00

Water Resources Pamphlets

- 1 **An Analysis of Contour Maps of Water Levels in Wells in Southwestern Louisiana, 1952 and 1953,**
by S.W. Fader, 1954, 7 pp. \$10.00
- 2 **An Analysis of Contour Maps of Water Levels in Southwestern Louisiana, 1954,**
by S.W. Fader, 1955, 13 pp. \$10.00
- 3 **Geology and Ground-Water Resources of the Alexandria Area, Rapides Parish, Louisiana,**
by M.L. Klug, 1955, 23 pp. \$10.00
- 4 **An Analysis of Contour Maps of 1955 Water Levels, with a Discussion of Salt-Water Problems in Southwestern Louisiana,**
by S.W. Fader, 1957, 27 pp. \$10.00
- 5 **Water Levels and Water-Level Contour Maps for Southwestern Louisiana, 1956 and 1957,**
by S.W. Fader, 1958, 23 pp. \$10.00
- 6 **Summary of Ground-Water Conditions in Southwestern Louisiana, 1957 and 1958, with a Discussion of Iron in Water from the Chicot Aquifer,**
by A.N. Turcan Jr. and S.W. Fader, 1959, 29 pp. \$10.00
- 7 **Ground-Water Resources of the Red River Valley Alluvium in Louisiana,**
by R. Newcome Jr., 1960, 21 pp. \$20.00
- 8 **Water Levels and Water-Level Contour Maps for Southwestern Louisiana, 1958 and 1959,**
by A.H. Harder, 1960, 27 pp. \$10.00
- 9 **Interim Report on Ground-Water Conditions between Baton Rouge and New Orleans, Louisiana,**
by G.T. Cardwell and J.R. Rollo, 1960, 44 pp. \$10.00
- 10 **Water Levels and Water-Level Contour Maps for Southwestern Louisiana, 1959 and Spring 1960, with a Discussion of Ground-Water Withdrawals,**
by A.H. Harder, 1961, 25 pp. \$10.00
- 11 **Water Levels in Southwestern Louisiana, April 1960 to April 1961, with a Discussion of Water-Level Trends from 1950 to 1960,**
by C. Kilburn and H.M. Whitman, 1962, 21 pp. \$10.00
- 12 **Ground-Water Conditions in Southwestern Louisiana, 1961 and 1962, with a Discussion of the Chicot Aquifer in the Coastal Area,**
by H.M. Whitman and C. Kilburn, 1963, 32 pp. \$10.00
- 13 **Gas and Brackish Water in Fresh-Water Aquifers, Lake Charles Area, Louisiana,**
by A.L. Hodges Jr., S.M. Rogers, and A.H. Harder, 1963, 35 pp. \$10.00
- 14 **Methane in the Fresh-Water Aquifers of Southwestern Louisiana and Theoretical Explosion Hazards,**
by A.H. Harder, H.M. Whitman, and S.M. Rogers, 1965, 22 pp. \$10.00
- 15 **Feasibility of a Scavenger-Well System as a Solution to the Problem of Vertical Salt-Water Encroachment,**
by R.A. Long, 1965, 27 pp. \$10.00
- 16 **Estimating Water Quality from Electrical Logs in Southwestern Louisiana,**
by H.M. Whitman, 1965, 13 pp. \$10.00

- 17 **Salt-Water Encroachment, Baton Rouge Area, Louisiana,**
by R.R. Meyer and J.R. Rollo, 1965, 9 pp. \$10.00
- 18 **Progress Report on the Availability of Fresh Water, Lake Pontchartrain Area, Louisiana,**
by G.T. Cardwell, M.J. Forbes Jr., and M.W. Gaydos, 1966, 24 pp. \$10.00
- 19 **Calculation of Water Quality from Electrical Logs, Theory and Practice,**
by A.N. Turcan Jr., 1966, 23 pp. \$10.00
- 20 **Pumpage of Water in Louisiana, 1965,**
by P.P. Bieber and M.J. Forbes, 1966, 8 pp. \$10.00
- 20-A **Geology and Hydrology of the Sparta Formation in the Haynesville Area, 1967,**
6 pp. plus cross sections, \$10.00
- 21 **Water Resources of the Lettsworth-Innis-Batchelor Area, Pointe Coupee Parish, Louisiana,**
by A.H. Harder, V.B. Sauer, and W.L. Broussard, 1968, 28 pp. \$10.00
- 22 **Water-Level Trends in Southeastern Louisiana,**
by D.C. Dial, 1968, 11 pp. \$10.00
- 23 **Water Resources of Northwestern St. Landry Parish and Vicinity, Louisiana,**
by R.L. Hosman, W.L. Broussard, and A.J. Calandro, 1970, 29 pp. \$10.00
- 24 **Water Resources of the Slagle-Simpson-Flatwoods Area, Louisiana,**
by C.D. Whiteman Jr., A.J. Calandro, and W.L. Broussard, 1970, 23 pp. \$10.00
- 25 **Water Resources of the Belmont-Marthville-Robeline Area, Louisiana,**
by A.J. Calandro, W.L. Broussard, and R.L. Hosman, 1970, 21 pp. \$10.00
- 26 **Pumpage of Water in Louisiana,**
by Don C. Dial, USGS, 1970, 10 pp. \$10.00
- 27 **Ground-Water Pumpage and Related Effects, Southwestern Louisiana, 1970 with a Section on Surface Water Withdrawals,**
by Allen Zack, USGS, 1971, 33 pp. \$10.00



Open-File Series are published to make the results of various research project available to the public.

Open-File Series

87-01 Soil Geomorphology of the Amite River,

by W.J. Autin, 1987, 20 pp.

Describes and locates soils in a 2,000-mi drainage area, with suggestions for improving soil survey accuracy in flood plains. Maps and references. \$10.00

87-02 Quaternary Depositional Surfaces of Western Louisiana,

by R.H. Kesel, 1987, 16 pp.

Examines the Quaternary coastal terraces and the graveliferous terrace units in west Louisiana. \$10.00

87-03 Surface Impoundments Assessment Final Report for Louisiana,

by W.J. Autin, 1987, 43 pp.

A record of the legislative and technical efforts to evaluate relationships between waste disposal practices and the comprehensive management of hazardous waste, with suggestions for further research. \$15.00

87-04 A Preliminary Assessment of the Sand and Aggregate Resources of Three Areas of the Louisiana Inner Continental Shelf: Timbalier Islands, Chandeleur Islands, and Trinity Shoal,

by J.R. Suter and S. Penland, 1987, 58 pp.

A high-resolution seismic investigation suggests promising deposits of sand in all three areas. The authors recommend vibracore sampling for further confirmation. \$15.00

88-01 Analysis of the Environmental Effects of Sand Resource Utilization on the Louisiana Continental Shelf,

by J. Mossa, 1988, 103 pp.

This study uses wave energy-refraction models to assess these possible changes. Includes 71 pages of wave-refraction diagrams based on various sand-removal scenarios. \$20.00

88-02 Tide Gage Data Summary, 1988, 125 pp.

by S. Penland, K. E. Ramsey, R. A. McBride, T. F. Moslow and K. A. Westphal
Appendix to Coastal Geology Technical Report No. 3 (Relative Sea Level Rise and Subsidence in Louisiana and the Gulf of Mexico). \$15.00

Note: Open-File Series Nos. 88-03, 88-04, and 88-05 are appendixes to Coastal Geology Technical Report No. 4 (Relative Sea Level Rise and Delta-plain Development in the Terrebonne Parish Region).

88-03 Tide Gage Descriptions and Data, 1988, 68 pp.

by S. Penland, K. E. Ramsey, R. A. McBride, T. F. Moslow and K. A. Westphal \$15.00

88-04 Benchmark Descriptions and Locations, 1988, 13 pp.

by S. Penland, K. E. Ramsey, R. A. McBride, T. F. Moslow and K. A. Westphal \$10.00

88-05 Carbon-14 Data Summary, 1988, 4 pp.

by S. Penland, K. E. Ramsey, R. A. McBride, T. F. Moslow and K. A. Westphal \$10.00

88-06 Reconnaissance Investigation of Shoreface and Inner Shelf Sand Resources in Terrebonne Parish: Point Au Fer to Timbalier Island,

by S. Penland, J.R. Suter, and R.A. McBride, 1988, 73 pp.

Seismic and vibracore data have identified 25 potential, nearby sand sources at Cat Island Pass and at Ship Shoal. \$15.00

88–07 Recharge Potential of Louisiana Aquifers: A Supplement to the State Aquifer Recharge Map and Atlas Plates,

by Don Boniol, 1988, 50 pp. plus appendix.

Accompaniment to the State Aquifer Recharge Map and Atlas plates. Capsule introductions to geohydrology, aquifer recharge, and soils recharge potential. \$15.00

Note: Maps for 88-07 are free and available from the Louisiana Department of Environmental Quality. Louisiana Department of Environmental Quality, Office of the Secretary, Aquifer Evaluation and Protection Unit, P.O. Box 4301, Baton Rouge, LA 70821-4301, Phone: (225) 219-3510, Fax: (225) 219-3971, Email: DEQDWPPTeam@LA.GOV

88–08 Nearshore Sand Resources in the Eastern Isles Dernieres Barrier Island Arc,

by S. Penland and J.R. Suter, 1988, 185 pp.

A preliminary assessment of the sand resources of the region around the eastern Isles Dernieres in Terrebonne Parish, Louisiana, with an eye toward possible use of such sands for barrier island stabilization. \$20.00

89–01 Water Level Change, Sea Level Rise, Subsidence, and Coastal Structures in Louisiana: An Annotated Bibliography,

by L.D. Nakashima and L.M. Loudon, 1989, 27 pp.

A comprehensive listing of publications focusing on water-level and eustatic change, regional subsidence, coastal structures, hurricane impacts, shoreline change, wetland modification, nearshore processes, and headland geomorphology. \$15.00

90–01 Wetland Valuation for Petroleum-related Operations,

by D.K. Batker, J.E. Johnston III, M.A. Surman, W.C. Kimbrell, and J.L. Richard, 1990, 54 pp.

Examines the feasibility of wetland valuation, suggests methodologies, and provides recommendations for further study. \$15.00

90–02 Oil and Gas Fields of Louisiana: The Nebo-Hemphill Field, La Salle Parish,

by Paul N. Lawless and George F. Hart, 1990, 88 pp.

Traces the structural development of the La Salle Arch in north-central Louisiana and describes hydrocarbon reserves within the Nebo-Hemphill Field. \$20.00

91–01 Geologic and Derivative Engineering Geology Hazard Maps of East Baton Rouge Parish, Louisiana,

compiled by W.J. Autin and R.P. McCulloh, 1991. (File copies available at Louisiana Geological Survey office for inspection only.)

91–02 Surface Faults in East Baton Rouge Parish,

by R.P. McCulloh, 1991, 25 pp.

Investigates the two active faults that traverse East Baton Rouge Parish and affirms the existence of other linear surface discontinuities. Includes 5 oversized, folded plates. \$30.00; \$20.00 for text only

91–03 September Sweep: Louisiana's 1987 Beach Cleanup,

by D.M. Lindstedt and J.C. Holmes, 1988, 35 pp.

Records and analyzes the results of surveys taken during the first statewide Louisiana Coastal Cleanup, held 19 September 1987. Information gathered by the participants provides the first statewide overview of coastal debris. \$10.00

92–01 Surface Geologic Mapping in Louisiana: History, Present Status, and Future Prospects,

by R.P. McCulloh, 1992, 20 pp.

Reviews geologic mapping activity in Louisiana from 1934, comparing the decline in geologic mapping in Louisiana to the national decline. \$10.00

93–01 Annotated Molluscan Checklist,

by F.M. Swain and E.G. Anderson, 1993, chart, should be purchased in addition to Geological Bulletin No. 45. \$15.00



93–02 Occurrence of 53 Characteristic Species of Ostracoda from the Cotton Valley Group of Northern Gulf Coastal Areas by Depth, Formation, and Interval Below the top of the Cotton Valley Group,

by F.M. Swain and E.G. Anderson, 1993, 99 pp.

Should be purchased in addition to Geological Bulletin No. 45. \$20.00

93–03 Addenda to the Louisiana Geological Survey Geological Bulletin No. 45,

by F.M. Swain and E.G. Anderson, 1993, 3 pp. plus 2 large charts.

Should be purchased in addition to Geological Bulletin No. 45. \$10.00

94–01 Sediment Intervals and Correlative Hiatuses Associated with Growth Faults—An Overview of Published Examples,

by R.P. McCulloh, 1984, 18 pp. plus appendix.

Describes a stratigraphic configuration associated with some growth faults, characterized by thick downthrown sequences lacking upthrown equivalents, and summarizes references to this configuration in published literature and unpublished works. \$10.00

94–02 Distinctive Patterns in the Areal Distribution of Undifferentiated Alluvium of Upland Streams in North Louisiana,

by R.P. McCulloh, 1994, 19 pp.

Examines the drastic pinching and swelling that characterizes certain individual alluvial bottomlands, and the rectilinear patterns, suggestive of structural influence, that characterize some networks of bottomlands in north Louisiana. \$10.00

95–01 Cumulative/Secondary Impact Identification and Evaluation of Authorized and Exempted Activities and in the Louisiana Coastal Zone, Phase I,

by Aaron Bass, 1995, 44 pp. plus appendices (part 1 of 2).

A review of impacts associated with activities exempt from the Louisiana Department of Natural Resources, Coastal Management Division, regulatory authority. Includes total impact calculations by habitat type for activities occurring in fastlands and lands greater than five feet MSL, from 1981 to 1994. \$15.00

95–02 Depositional Systems of the Lower Miocene of Cameron Parish, Louisiana, and Their Relationship to the Occurrence and Production of Oil and Gas,

by Michael Brister, 1995, 34 pp. plus appendix.

A semiregional study of the Lower Miocene section located onshore Cameron Parish in southwest Louisiana. Investigates the relationship of sediment depositional patterns to the occurrence of oil and gas fields, which primarily occur in structural traps created contemporaneously with deposition of interfingering sands and shales along the shelf margin. Includes 4 cross sections, 36x40 in. \$50.00

96–01 Topographic Criteria Bearing on the Interpreted Placement of the Traces of Faults of the Baton Rouge System in Relation to Their Fault-line Scarps,

by R.P. McCulloh, 1996, 23 pp.

Supplements and sets forth more explicitly the analysis of geomorphic expression used in OFS No. 91–02 to map the traces of active surface faults of the Baton Rouge system at the toe positions of their fault-line scarps in East Baton Rouge Parish. Documents the distinctive topographic patterns of substantial regularity shown by these scarps, and interprets them as examples of variable slope reduction. \$11.00

96-02 Cumulative/Secondary Impact Identification and Evaluation in the Louisiana Coastal Zone, Phase II: A Biological Characterization of a Representative Fastland Marsh and an Adjacent non-Fastland Estuarine Marsh,

by Aaron Bass, 1996, 124 pp. plus appendices (part 2 of 2).

A 12-month study conducted at Bayou Sauvage National Wildlife Refuge (Orleans Parish), focusing on biomass export from a fastland to adjacent coastal waters through a municipal pumping station and through a stop-log water control structure. Presents data, summaries, and interpretations based on sites sampled, and includes an analysis of the uses and interrelationship between the environment of the fastlands and the immediately adjacent area. \$20.00

96-03 Marsh Buggy and Airboat Use in Marsh Habitats, Phase I,

by Aaron Bass, 1996, 54 pp. plus appendices (part 1 of 2).

A literature review on the adverse impacts caused by marsh buggies and airboats in the coastal zone. Phase I covers (1) summaries of relevant literature associated with impacts; (2) a summary of direct and secondary impacts based on the literature review and other sources; and (3) review of currently used technology and work methodologies used to conduct 3-D seismic surveys. \$15.00

97-01 Potential Seismic Risk Associated with Louisiana Wrench Faulting,

An overview of the middle Mesozoic zone of crustal weakness, caused by transform faulting in the north-central gulf coastal area, during plate separation and rifting, which may have become zones of subsequent tectonic adjustments, and the possible physical structural link between a known major, active earthquake zone—the New Madrid—and areas of recorded earthquakes. \$15.00

97-02 Marsh Buggy and Airboat Use in Marsh Habitats, Phase II,

by Aaron Bass, 1997, 59 pp. plus appendices (part 2 of 2).

An investigation of the environmental impacts on and recovery rates of vegetation and soil sustained by the use of marsh buggies and airboats associated with seismic surveys in the Louisiana coastal zone, studied in two federal wildlife refuges. \$15.00

04-01 Surface Geology of Calcasieu Parish,

by Saul Aronow with a preface by P.V. Heinrich, 2004, 22 pp. \$10.00

06-01 Interpretive Mapping of Stream Alluvium Using Elevation Contours,

by Richard P. McCulloh, 2006, 13 pp. \$15.00

10-1 - Monitoring Saltwater Front within Sparta Aquifer in North Central Louisiana

by Douglas Carlson and Thomas Van Biersel, 2010, 40 pp. Discusses the extent of the Sparta aquifer, usage patterns in parishes affected, chloride concentrations. \$10.00



10-02 - Distribution of Chemical Agents Which Are Adversely Impacting Water Quality That Are Related to Lignite Within Aquifers of Northwestern Louisiana

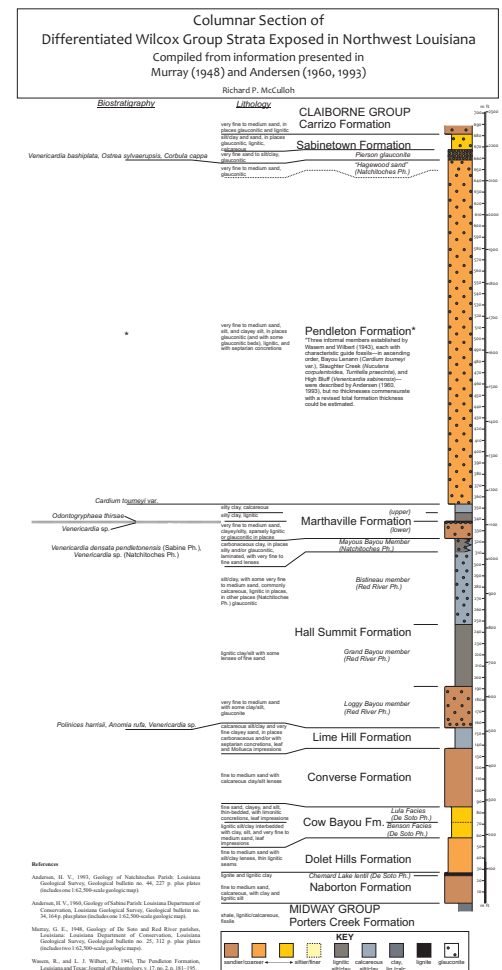
by Douglas Carlson and Thomas Van Biersel, 2010, 68 pp.

Distribution of chemical agents which are adversely impacting water quality that are related to lignite within aquifers of Northwestern Louisiana. \$15.00

16-01 Columnar Section of Differentiated Wilcox Group Strata Exposed in Northwest Louisiana

by Richard P. McCulloh, 2016, 4 pp.

Compiled from information presented in Murray (1948) and Andersen (1960, 1993) Presents an attempt to graphically summarize in a single diagram essential information pertaining to differentiated surface Wilcox Group strata in northwest Louisiana given for De Soto and Red River parishes by Murray (Geological Bulletin 25, 1948) and for Sabine and Natchitoches parishes by Andersen (Geological Bulletin 34, 1960, and Geological Bulletin 44, 1993). \$10.00. Digital copy available.



The Louisiana Geological Survey Report of Investigations Series are comprehensive reports on geology and related topics, and are generally narrow in topical scope or in geographic area.

Report of Investigations Series

99-01 Neogene Stratigraphy and Depositional Environments of the Fort Polk and Slagle Areas of Western Louisiana,

by David J. Hinds, 1999, 60 pp. plus appendix.

Discusses physiography, lithostratigraphy, surface geology, and structure of an area in Vernon Parish equivalent to slightly greater than two 7.5-minute quadrangles. Includes sections on subsurface lithostratigraphic correlation, environments of deposition, and Neogene genetic stratigraphic framework. also includes plates 1 and 2 that are reduced versions of Geologic Quadrangle Map Series GQ-1 and GQ-2 by the author. \$15.00

02-01 Geology of the Fort Polk Region, Sabine, Natchitoches, and Vernon Parishes, Louisiana,

by R.P. McCulloh and P.V. Heinrich

With a chapter on Natural Occurrence of Bogs, Seeps, and Springs, by Bradford C. Hanson, 2002, 82 pp. plus Appendix and CD \$25.00

03-01 Evaluation of Aquifer Capacity to Sustain Short-, Long-Term Ground Water Withdrawal from Point Sources in the Chicot Aquifer for Southwest Louisiana: Part 1,

by Doug Carlson, Riley Milner, and Bradford C. Hanson, 2003, 90 pp. plus Appendix, \$70.00

06-01 Research Related to Two Common Restoration Project Types in Coastal Louisiana: Marsh Terracing & Hydrologic Restoration,

by Bill Good, Hampton Peele and Reed Bourgeois, 2006, 40 pp. \$15.00

09-01 Long-term Hydrogeologic Characterization of Water Supply Wells Affected by Hurricanes Katrina and Rita along the North Shore of Lake Pontchartrain

by Thomas P. Van Biersel, L. Riley Milner, Douglas A. Carlson, and Elizabeth K. Mier, 2009, 56 pp.

Analysis of groundwater samples collected over a two-year period. \$15.00

10-01 Summary of Surface and Ground Water Resources Publications and Readily Available Data for Louisiana

by Thomas P. Van Biersel, Douglas A. Carlson and L. Riley Milner, 2010, 203 pp. This report includes a discussion of existing data on the principal freshwater aquifers and surface water basins of Louisiana. Sources of groundwater are discussed by regions. \$15.00

12-01 - 2011 Atchafalaya Basin Inundation Data Collection and Damage Assessment Project

by Carlson, D., Horn, M., Van Biersel, T., and Fruge, D., 2012, 253 pp.

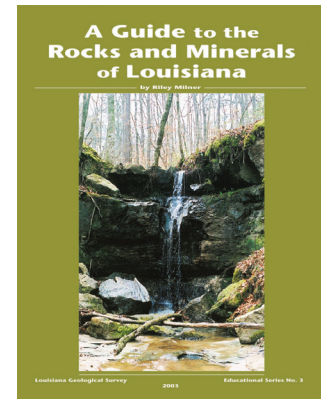
This report contains in excess of 5,000 analyses as well as months of gaging data collected from a multitude of sites. It is an archive of the information collected and made available to the authors and collaborators during the preparation of this report. \$15.00



Educational Series

(No charge for Louisiana teachers; requires written request on school letterhead)

- 1 **Earth Stuff, Minerals and Rocks: A Primer,**
by Bradford C. Hanson, 1999, 35 pp. plus appendices.
Series introduction. Basic presentation of definitions of minerals, crystals, and rocks, with an emphasis and history on those found in Louisiana. Groups information into grades K-2, 3-6, and 7-9. Includes puzzles and a glossary; suitable for transparencies (photocopy)
- 2 **Earth Stuff, Ground Water: A Primer,**
by Bradford C. Hanson, 1999, 18 pp. plus appendices.
Discusses origins and uses of water in Louisiana, with word puzzles and instructions for making a 3-D potentiometric surface map. Groups information into grades K-2, 3-6, and 7-9; suitable for transparencies. (photocopy)
- 3 **Guide to Rocks and Minerals of Louisiana,**
by Riley Milner, 2003
A general overview of the geologic history of Louisiana, and the rocks and minerals found throughout the state. Discussion on the natural resources; oil and gas, salt mines, sand and gravel, mineralogy, and the surface geologic development of Louisiana. The publication is of interest to any age individuals interested in the rocks and minerals found in Louisiana, and specifically for school teachers K-12. \$20.00
- 4 **Louisiana's Ground-Water Resources,**
by Douglas Carlson, 2005, 27 pp. \$20.00
- 5 **Louisiana Rock and Mineral Kit.** \$25.00



No charge for publications in this series.

Public Information Series are published as general information about a geologic subject and are intended for use by educators, students and the general public.

1 Overview of Operations and Contractual Services, 1998, 2 pp.

Introduction and mission statement; general outline of the Survey's programs and functions.

2 Louisiana Petroleum Industry Facts, 2000, 8 pp.

Year	Oil Production (MMbbl)	Gas Production (MMcf)	Crude Oil Reserves (MMbbl)	Gas Reserves (MMcf)
1998	1,000	1,000	1,000	1,000
1999	1,000	1,000	1,000	1,000
2000	1,000	1,000	1,000	1,000

Lists pertinent historic facts of the oil and gas industry, salt domes, crude oil refineries, and industry statistics.

3 The Value of Geologic Maps, 2000, 4 pp.

Discusses the myriad potential uses, applications, and benefits of surface geologic maps of the state, with a figure illustrating the cumulative map production by parish at scales of 1:62,500 and greater.

4 Geologic Mapping in Louisiana, 1998, 2 pp.

Presents the background of geologic mapping in the state and summarizes geologic-mapping activities since 1985, with special emphasis on cooperative agreements with the U.S. Geological Survey for compilations of surface geology at intermediate scales (1:250,000- and 1:100,000-scale quadrangle formats).

5 Lignite Resources in Louisiana, 2000, 4 pp.

Provides information on lignite formation, occurrence, and history of lignite mining in Louisiana.

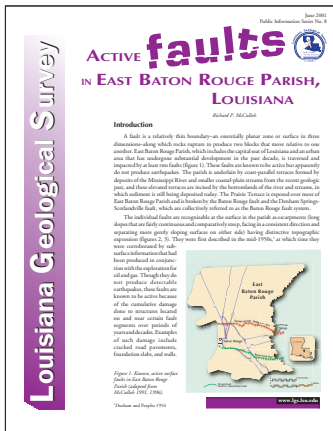
6 Louisiana Geofacts, 2001, 8 pp.

Provides summary information on not well known, but interesting, geological facts of Louisiana.

7 Earthquakes in Louisiana, 2001, 8 pp.

Presents information on fault types, measurements, and magnitudes of Louisiana earthquakes.

8 Active Faults in East Baton Rouge Parish, Louisiana, 2001, 8 pp.



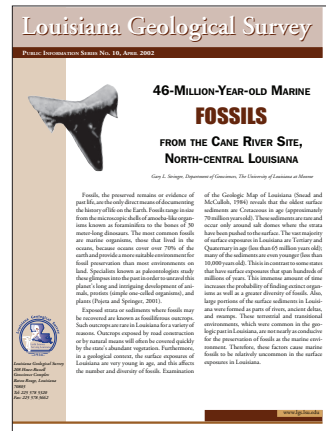
Provides information on the Baton Rouge Fault System, and discusses possibilities for future research.

9 Jennings Field— The Birthplace of Louisiana's Oil Industry, 2001,



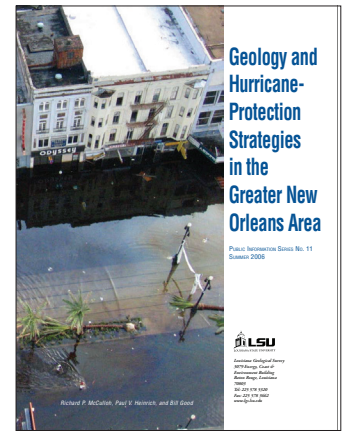
History of Louisiana's oil industry including geology of the area and a multi-page historical photo essay.

10 46-Million-Year-Old Fossils from the Cane River Site, North-Central Louisiana, 2002, 7 pp.



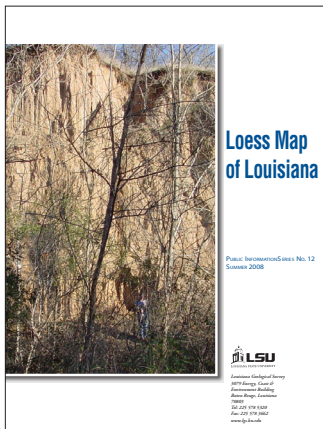
Provides fossil evidence to document the history of life on earth and to understand the geologic history of Louisiana.

11 Geology and Hurricane Protection Strategies in the Greater New Orleans Area, 2006, 31 pp.



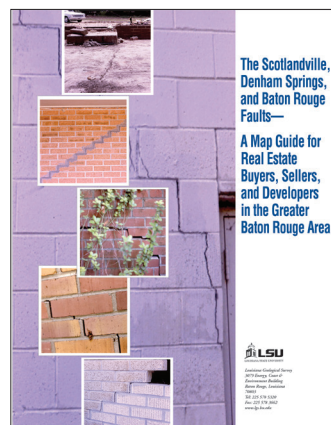
Focuses on the geological foundation that has led to different types of subsidence effects in the New Orleans area. These include effects that are thoroughly natural, those accelerated by activities in inhabited areas of coastal south Louisiana, and some that are entirely human induced. Reflection on the consequences of subsidence for continued habitation of south Louisiana, particularly the related increased vulnerability to storm damage. A hurricane-history section details Louisiana's and the wider Gulf Coast's experiences with hurricanes since the 1700s.

12 Loess Map of Louisiana, 2008, 4 pp.



Color booklet with photographs and a small-scale map.

13 The Scotlandville, Denham Springs, and Baton Rouge Faults: A Map Guide for Real Estate Buyers, Sellers and Developers in the Greater Baton Rouge Area, 2008, 38 pp.

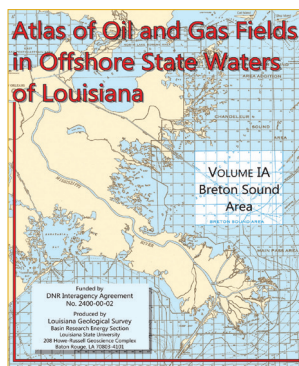


Color booklet with large-scale maps.

Reprints

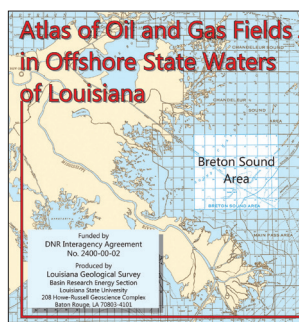
- 1 Subsurface Geology of St. Helena, Tangipahoa, Washington and St. Tammany Parishes, Louisiana, by H.H. Howe, pp. 121–55, in Transactions of the Gulf Coast Association of Geological Societies, Vol. 12, 1962. \$10.00**
- 2 Bigenerina humblei and The Humble, H.J. Ellender No. 1, Lirette Field, Terrebonne Parish, E.A. Butler, pp. 271–82, in Transactions of the Gulf Coast Association of Geological Societies, Vol. 12, 1962. \$10.00**

Energy Series



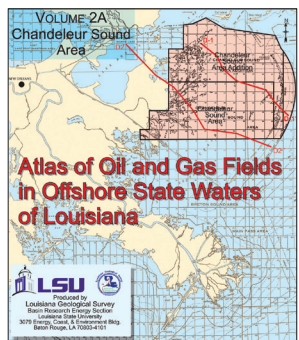
TR 95-2 Deltaic Reservoir Characterization: Geological, Petrophysical, CS-1-96 Chronostratigraphic Cross Sections: Louisiana Offshore State Water Areas, by B.L. Jones, C.J. John and B.J. Harder, 1996, 25 pp.

Detailed geological study of a core from the Bee Brake Field in Concordia Parish, La. Includes sedimentology, clay mineralogy, organic geochemistry, paleoenvironments, and engineering and petrophysics. \$40.00



CS-1-96 Chronostratigraphic Cross Sections: Louisiana Offshore State Water Areas, by B.L. Jones, C.J. John and B.J. Harder, 1996, 25 pp.

Contains 22 electric log stratigraphic cross sections from offshore Louisiana (state area) showing biostratigraphic zones. Included are index charts of biostratigraphic zones used in the study; index map of cross-section locations (17 1/4 x 22 in.); and type depositional styles/facies represented by the SP log shapes. \$105.00



CS-2-97 Middle Wilcox Correlation of Central Louisiana, by L.N. Glawe and J.B. Echols, 1997.

Folder containing two east-to-west strike-oriented log cross sections that depict the correlation of Middle Wilcox stratigraphic units in central Louisiana. Cross sections are at a vertical scale of 1 in. = 100 ft. Middle Wilcox stratigraphic markers include Big Shale, Tew Lake Marker, Yakey, Artman, and Campbell. \$50.00.



AT-1-00 Atlas of Oil and Gas Fields in Offshore State Waters of Louisiana (Breton Sound Area, Volumes 1A and 1B),

by Chacko J. John, B.J. Harder, B.L. Jones, R.P. McCulloh, R.J. Bourgeois, and M. Byron Miller, 2000.

This atlas is a compilation of currently available information from all fields in the area. It includes a short description of the geology, field map, type logs, structure maps, cross sections, Louisiana Office of Conservation orders, and annual production along with a CD containing information on individual LUW code tables, well history, etc. \$200.00.

AT-1-06 Atlas of Oil and Gas Fields in Offshore State Waters of Louisiana (Chandeleur Sound Area, Volumes 2A & 2

by Chacko J. John, B.J. Harder, R.J. Bourgeois, M. Byron Miller, and B.L. Jones, 2006. \$200.00.

AT-1-10 Atlas of Oil and Gas Fields in Offshore State Waters of Louisiana Main Pass Area, Volume 3),

by Bobby L. Jones, Chacko J. John, Brian J. Harder, Reed J. Bourgeois, and Warren Schulingkamp, 2010, 1 CD.

This atlas is a compilation of currently available information from all fields in the area. It includes a short description of the geology, field map, type logs, structure maps, cross sections, Louisiana Office of Conservation orders, and annual production on a CD containing information on individual LUW code tablets, well history, etc. Available only on CD. \$50.00

Basin Research Institute Bulletins

June 1991 - Vol. 1 No. 1

by John Echols, Arnold Bouma, et al., 1991, 29 pp., available in pdf .
Submarine fan channels, reevaluation of Wilcox Group Rocks, overview of geochemistry. \$15.00

March 1992 - Vol. 2 No. 1

by John Echols, Don Goddard, et al., 1992. 71 pp., available in pdf .
Core program for clastic reservoirs, two new deltas in Atchafalaya Bay, heterostegina zone exploration. \$15.00

April 1993 - Vol. 3 No. 1

by John Echols, Don Goddard, et al., 1993, 97 pp., available in pdf .
Studies of subsurface Wilcox Group, geopressures mapped in different stratigraphic units, Miller Sands in the Middle Wilcox reservoir. \$15.00

April 1994 - Vol. 4 No. 1

by Donald Goddard, Reed Bourgeois, Ezat Heydari, 1994, 63 pp, available in pdf .
Fluctuations in petroleum industry, organic geochemistry of shales, coals, and oils, evidence of wrench faulting in north and central Louisiana. \$15.00

June 1995 - Vol. 5 No. 1

by John Echols, Don Goddard, Arnold Bouma, et al., 1995, 45 pp, available in pdf .
Coalbed methane, geological characteristics of the Wilds Distributary Channel, microtextural analysis of Wilds sandstone. \$15.00

July 1996 - Vol. 6 No. 1

by Ron Zimmerman, 1996, 68 pp., available in pdf .
Oil spills and the state's responsibility, fracture genesis in the Austin chalk, fine-grained submarine fans. \$15.00

August 1997 - Vol. 7 No. 1

by Chacko John, Bobby Jones, et al., 1997, 66 pp., available in pdf .
Tuscaloosa marine shale, geochemical analysis of Tuscaloosa oils, facies development in the Wax Lake Outlet Delta. \$15.00

November 1998 - Vol. 8 No. 1

by Chacko John, Brian Harder, Ron Zimmerman, et al., 1998, 39 pp, available in pdf .
Geopressured-geothermal reservoirs of the Gulf of Mexico Basin, estimating oil reserves, Little Creek structure in LaSalle Parish, Louisiana. \$15.00

June 2000 - Vol. 9 No. 1

by Ron Zimmerman, John Echols, Paul Heinrich, et al., 2000, 74 pp, available in pdf .
Coalbed methane, DeQuincy fault line scarp, Pliocene surface stratigraphy in Fort Polk region. \$15.00



The titles in this series are written for a lay audience and synthesize available information on the surface and subsurface geology of state-owned lands in summary format. Each document sketches the geologic framework of an area encompassing such lands, and may include sections on natural regions, mineral commodities (energy and/or nonfuel), ground water, paleontology, cultural (archaeological) resources, or other aspects specific to the area.

Poster Series

01-10 – Louisiana’s Principal Freshwater Aquifers, by Thomas Van Biersel,
free to pick up, \$10 to ship.

State Parks and Land Series

1 - Fontainebleau State Park,

by Richard P. McCulloh, 2011, 21 pp.
Summarizes the geology, mineral resources, natural regions, and archaeological sites of Fontainebleau State Park and its environs. Includes information sources and a glossary. Book \$10.00, CD \$10.00

2 - Port Hudson State Historic Site and National Historic Landmark, and Surrounding Areas,

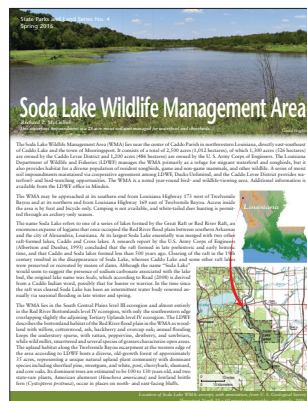
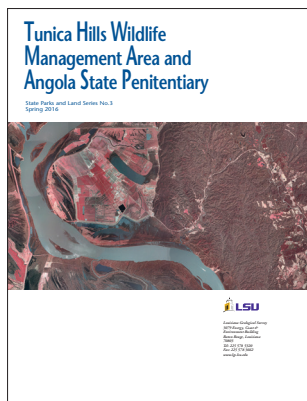
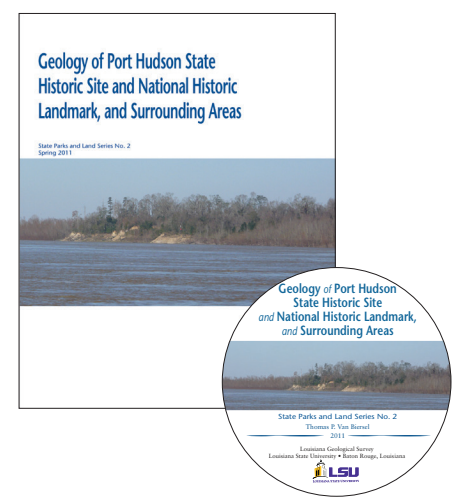
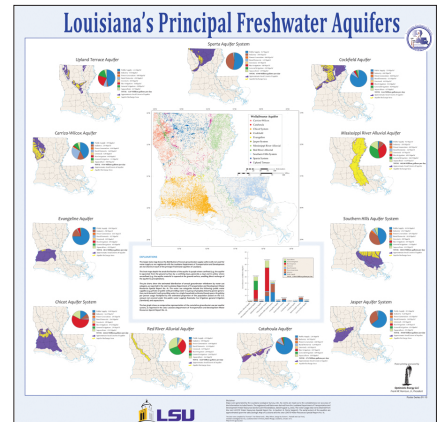
by Thomas P. Van Biersel, 2011, 76 pp.
Summarizes the geology, mineral resources, natural regions, and history of Port Hudson State Historic Site and National Historic Landmark and its environs. Includes information sources and a historic map, custom soil resource report, comprehensive gallery of photographs, related Web links, and self-guided driving trip. 76 pages. Book \$20.00, CD \$10.00

3 - Tunica Hills Wildlife Management Area and Angola State Penitentiary,

by Rick McCulloh, 2016, 28 pp.
Summarizes the geology, natural regions, mineral resources, groundwater resources, and cultural resources of the area encompassing the Tunica Hills Wildlife Management Area and the Louisiana State Penitentiary at Angola. Includes information sources and a glossary. \$10.00

4 - Soda Lake Wildlife Management Area,

by Rick McCulloh, 2016, 4 pp.
Summarizes the geology, natural regions, mineral resources, and groundwater resources of the area encompassing the Soda Lake Wildlife Management Area in northwestern Louisiana. Includes a list of information sources. \$10.00



Underlined bulletin references indicate a complete report of the parish. References to maps are not included. The following acronyms are used in the index:

AT	Atlas
CRB	Clay Resources Bulletin
CGTR	Coastal Geology Technical Report
ER	Early Report
GB	Geological Bulletin
GP	Geological Pamphlet
MRB	Mineral Resources Bulletin
OFS	Open-File Series
WRB	Water Resources Bulletin
WRP	Water Resources Pamphlet
WRS	Water Resources Series

- ▶ **Acadia**
GB 21, 30, 36
Folio Series 5
WRP 27
ER 1905, 1907
OFS 87-03, 88-07
WRS-4
- ▶ **Allen**
GB 9, 19, 27, 30, 42
Folio Series 5
WRB 10
WRP 1, 2, 4-6, 8, 10,
12, 14, 27
OFS 87-02, 87-03, 88-07
WRB 20
WRS-4
- ▶ **Ascension**
GB 13
Folio Series 6
CRB 1
WRB 7
WRP 9
ER 1905
CGTR 4
OFS 87-01, 87-03, 88-07
- ▶ **Assumption**
WRP 9
ER 1905
CGTR 3,4
OFS 87-03, 88-04, 88-07
- ▶ **Avoyelles**
GB 18, 42
GP1
Folio Series 5, 7
Guidebook 4
CRB 1
WRB 15
WRP 7, 23
ER 1905
OFS 87-03, 88-07
- ▶ **Beauregard**
GB 19, 27, 30, 42
Folio Series 5
CRB 1
WRB 10
WRP 1, 2, 4-6, 8,
10-12, 14, 27
OFS 87-02, 87-03, 88-07
WRB 20
WRS-4
- ▶ **Bienville**
GB 14, 19, 21, 32,
33, 41, 44, 45
GP 3
Folio Series 7

- CRB 1
ER 1905
OFS 87-03, 88-07
- ▶ **Bossier**
GB 33, 45
GP 5
Folio Series 7
CRB 1
WRB 5
WRP 7
ER 1899, 1905
OFS 87-03, 88-07
- ▶ **Caddo**
GB 19, 33, 38, 45
GP 3, 5
CRB 1, unnum.
WRB 5
WRP 7
ER 1899, 1905
OFS 87-03, 88-07
- ▶ **Calcasieu**
GB 19, 30
Folio Series 5
WRS 2
CRB 1
WRB 10
WRP 1, 2, 4-6, 8,
10-14, 27
ER 1869, 1899, 1902, 1905, 1907
OFS 04-01, OFS 87-03, 88-07
WRS-4
- ▶ **Caldwell**
GB 15, 19, 21
Folio Series 7
CRB 1
ER 1905
OFS 87-03, 88-03
- ▶ **Cameron**
GB 6, 19, 30
Folio Series 5
Guidebook 2
WRB 10
WRP 1, 2, 4-6, 8,
10-12, 14, 27
ER 1905, 1907
CGTR 3
OFS 87-03, 88-07,
91-03, 95-02
Report of Investigation 06-01
WRS-4
- ▶ **Catahoula**
GB 2, 7, 9, 19, 21, 31,
42
GP 3
Folio Series 7
CRB 1

- ER 1869, 1871, 1905,
1907
OFS 87-03, 88-07
Anthropological Study 1
- ▶ **Claiborne**
GB 19, 33, 38, 41, 45
GP 3
Folio Series 2, 7
CRB 1
ER 1899, 1905
OFS 87-03, 88-07
 - ▶ **Concordia**
GB 9, 42
Folio Series 7
CRB 1
ER 1905
OFS 87-03, 88-07
 - ▶ **DeSoto**
GB 19, 23, 25, 33, 45
GP 3, 5
Folio Series 7
MRB 2
CRB 1
WRP 7
ER 1869, 1905
OFS 87-03, 88-07
 - ▶ **East Baton Rouge**
GB 12, 19, 21, 39
Folio Series 6
Guidebook 4, 5
WRS 1
MRB 1
CRB 1
WRB 2
WRP 17
ER 1902, 1905
OFS 87-01, 87-03, 88-07, 91-02, 96-01
Anthropological Study 5
 - ▶ **East Carroll**
Folio Series 7
CRB 1
ER 1905
OFS 87-03, 88-07
 - ▶ **East Feliciana**
GB 12, 19
Folio Series 6
Guidebook 5
WRS 1
MRB 1
ER 1871, 1905
OFS 87-01, 87-03, 88-07
 - ▶ **Evangeline**
GB 19, 30, 31, 42
Folio Series 5
CRB 1
 - WRB 10, 20
WRP 1, 2, 4-8, 10-12, 14, 23, 27
ER 1869, 1905
OFS 87-03, 88-07
WRS-4
 - ▶ **Franklin**
GP 4
Folio Series 7
ER 1905
OFS 87-03, 88-07
 - ▶ **Grant**
GB 7, 10, 19, 20, 42, 44
GP 3
Folio Series 7
CRB 1
WRP 7
ER 1905, 1907
OFS 87-03, 88-07
 - ▶ **Iberia**
GB 1, 19, 30, 38
GP 7
Folio Series 5
Guidebook 1
WRB 10
WRP 1, 2, 4-6, 8,
10-12, 14, 27
ER 1869, 1905, 1907
CGTR 3
OFS 87-03, 87-04, 88-07
WRS-4
 - ▶ **Iberville**
GB 13
Folio Series 6
Guidebook 4
WRP 9
ER 1905
WRB 16
 - ▶ **Jackson**
GB 14, 33, 41, 45
Folio Series 7
CRB 1
ER 1905
OFS 87-03, 88-07
 - ▶ **Jefferson**
GB 26
Folio Series 6
WRB 9, 12
ER 1899, 1905
CGTR 3
OFS 87-03, 88-04,
88-06, 88-07, 91-03
 - ▶ **Jefferson Davis**
GB 19, 30, 36
Folio Series 5
WRB 10
 - WRP 1, 2, 4-6, 8,
10-12, 14, 27
OFS 87-03, 88-07
WRS-4
 - ▶ **Lafayette**
GB 3, 30
Folio Series 5
Guidebook 4
CRB 1
WRB 10
WRP 1, 2, 4-6, 8, 10,
12, 14, 27
ER 1902, 1905, 1907
OFS 88-03, 88-07
WRS-4
 - ▶ **Lafourche**
GB 26
Folio Series 6
Guidebook 3
ER 1905
CGTR 3, 4
OFS 87-03, 87-04,
88-04, 88-06, 88-07
91-03
 - ▶ **La Salle**
GB 7, 10, 19, 20, 21,
42
Folio Series 7
OFS 87-03, 88-07, 90-02
Anthropological Study 3
 - ▶ **Lincoln**
GB 33, 41, 45
GP 3
Folio Series 7
CRB 1
ER 1899, 1905
OFS 87-03, 88-07
 - ▶ **Livingston**
GB 12, 19
Folio Series 6
Guidebook 5
WRS 1
MRB 1
CRB 1
WRP 22
ER 1905
OFS 87-01, 87-03,
88-07
 - ▶ **Madison**
Folio Series 7
ER 1905
OFS 87-03, 88-07

- ▶ **Morehouse**
GB 19
Folio Series 7
ER 1871, 1905
OFS 87-03, 88-07
WRB 19
- ▶ **Natchitoches**
GB 14, 19, 23, 42, 44, 45
GP 3
Folio Series 7
CRB 1
WRB 4
WRP 7, 27
ER 1871, 1899, 1905, 1907
CGRT 3
OFS 87-02, 87-03, 88-07
- ▶ **Orleans**
Folio Series 6
WRB 9, 12
WRP 18
ER 1902, 1905
CGRT 3
OFS 87-03, 88-07
- ▶ **Ouachita**
GB 19, 24, 28, 33, 45
Folio series 7
CRB 1
ER 1905
OFS 87-03, 88-07
WRB 14
- ▶ **Plaquemines**
GB 8, 19, 26, 35
Folio Series 1, 6
Guidebook 3
WRB 9
ER 1905
CGTR 3
OFS 87-03, 87-04, 88-07, 90-01, 91-03
- ▶ **Pointe Coupee**
GB 42
Folio Series 5, 6
Guidebook 4
CRB 1
WRB 11
WRP 21
ER 1905
OFS 87-03, 88-07
- ▶ **Rapides**
GB 17, 18, 19, 42
GP 1, 2
Folio Series 5, 7
CRB 1
WRP 3, 7, 24
ER 1902, 1905
OFS 87-03, 88-07
WRS-4
- ▶ **Red River**
GB 19, 25, 44, 45
GP 3, 5
Folio Series 7
WRP 7
ER 1905
OFS 87-03, 88-07
- ▶ **Richland**
GB 19, 33
GP 4
Folio Series 7
ER 1905
OFS 87-03, 88-07
- ▶ **Sabine**
GB 4, 14, 19, 21, 23, 34, 42, 44, 45
GP 3, 5
Folio Series 7
MRB 2
CRB 1
WRB 3
WRP 25
ER 1899, 1905
OFS 87-03, 88-07
- ▶ **St. Bernard**
AT 1-06
GB 8, 26
Folio Series 6
CRB 1
Guidebook 3
WRB 9
ER 1905
CGTR 3
OFS 87-03, 87-04, 88-07
- ▶ **St. Charles**
GB 26
Folio Series 6
WRB 9, 12
WRP 9, 18
ER 1905
CGTR 3, 4
OFS 87-03, 88-07
- ▶ **St. Helena**
GB 12, 19
Folio Series 6
Guidebook 5
WRS 1
MRB 1
WRP 22
Reprint 1
ER 1905
OFS 87-01, 87-03, 88-07
- ▶ **St. James**
Folio Series 6
WRP 9
ER 1905
CGTR 3, 4
OFS 87-03, 88-07
- ▶ **St. John the Baptist**
Folio Series 6
CRB 1
WRB 12
WRP 9, 18
ER 1905
CGTR 3, 4
OFS 87-03, 88-07
- ▶ **St. Landry**
GB 30, 31, 42
Folio Series 5
Guidebook 4
CRB 1
WRB 10, 20
WRP 1, 2, 4-8, 10-12, 14, 23, 27
ER 1869, 1871, 1905, 1907
OFS 87-03, 88-07
WRS-4
- ▶ **St. Martin**
GB 3, 30
Folio Series 5, 6
Guidebook 4
WRB 10
WRP 27
ER 1905, 1907
CGTR 4
OFS 87-03, 88-07
WRS-4
- ▶ **St. Mary**
GB 30
Folio Series 5, 6
CRB 1
WRB 10
WRP 1, 2, 4-6, 8, 10-12, 14, 27
GP
CGTR 3, 4
OFS 87-03, 87-04, 88-04, 88-07, 91-03
WRS-4

- ▶ **St. Tammany**
 - GB 19
 - Folio Series 6
 - Guidebook 5
 - WRS 1
 - MRB 1
 - CRB 1
 - WRB 12
 - WRP 18, 22
 - Reprint 1
 - CGTR 3
 - OFS 87-03, 88-07
- ▶ **Tangipahoa**
 - GB 12, 19
 - Folio Series 6
 - Guidebook 5
 - WRS 1
 - MRB 1
 - CRB 1
 - WRB 12
 - WRP 18, 22
 - Reprint 2
 - ER 1902, 1905
 - CGTR 3
 - OFS 87-01, 87-03, 88-07
- ▶ **Tensas**
 - Folio Series 7
 - ER 1869, 1905
 - OFS 87-03, 88-07
- ▶ **Terrebonne**
 - GB 19, 21, 26
 - Folio Series 6
 - Guidebook 3
 - ER 1905
 - CGTR 3, 4
 - Reprint 2
 - OFS 87-03, 87-04, 88-04, 88-06, 88-07, 88-08, 89-01, 91-03
- ▶ **Union**
 - GB 19, 33, 41, 45
 - Folio Series 7
 - ER 1900
 - OFS 87-03, 88-07
 - WRB 17
- ▶ **Vermilion**
 - GB 6, 19, 30
 - Folio Series 5
 - WRB 10
 - WRP 1, 2, 4-6, 8, 10-12, 14, 27
 - ER 1905
 - CGTR 3
 - OFS 87-03, 87-04, 88-07
 - WRS-4
- ▶ **Vernon**
 - GB 19, 22, 42
 - Folio Series 5, 7
 - CRB 1
 - WRB 6
 - WRP 24
 - ER 1899, 1905
 - OFS 87-02, 87-03, 88-07
 - WRS-4
- ▶ **Washington**
 - GB 12, 19
 - Folio Series 6
 - Guidebook 5
 - WRS 1
 - MRB 1
 - CRB 1
 - WRP 22
 - Reprint 1
 - ER 1905
 - OFS 87-03, 88-07
- ▶ **Webster**
 - GB 14, 19, 29, 33, 41, 45
 - GP 3
 - Folio Series 7
 - ER 1899, 1905
 - OFS 87-03, 88-07
- ▶ **West Baton Rouge**
 - Folio Series 6
 - Guidebook 4
 - CRB 1
 - ER 1905
 - OFS 87-03, 88-07
- ▶ **West Carroll**
 - Folio Series 7
 - ER 1905
 - OFS 87-03, 88-07
- ▶ **West Feliciana**
 - GB 12, 19
 - Folio Series 6
 - Guidebook 5
 - WRS 1
 - MRB 1
 - CRB 1
 - ER 1905
 - OFS 87-03, 88-07

Product Ordering Information

Copy the order blank in this catalog, or come by our office on the Louisiana State University campus (see location map; parking on campus should be arranged through the Visitor's Center at (225) 578-5030).

All mail orders must either be accompanied by check or money order made payable to LSU/LGS, or charged to your credit card. You can fax your order to us at (225) 578-3662 (credit card orders only). Prices are subject to change without notice.

Mailing Charges

The mailing charge is calculated at library rate (see list). Please add the appropriate amount to your order subtotal.

Pre-payment in Full Required

No Returns or Refunds

PUBLICATION ORDER FORM

Please send to:

Name _____

Address _____

City _____ State _____ Zip _____

Phone (if we have questions about your order) _____

E-mail address _____
(for shipping notification)

Mail order form and payment to:
 Louisiana Geological Survey
 Louisiana State University
 3079 Energy, Coast & Environment Building
 Baton Rouge, LA 70803
 Phone: (225) 578-8590 • Fax: (225) 578-3662
 Email: poneil2@lsu.edu

QTY.	Publication Number & Title	Price Each	Total

Subtotal	
Shipping & Handling (see table at left)	
4% TAX for shipments in Louisiana, 9% TAX for shipments in Baton Rouge	
TOTAL ENCLOSED (U.S. currency only)	

Please include shipping and handling charges

Shipping & Handling Charges

Up to \$7.00	add \$3.50
7.01 to 12.00	add 3.75
12.01 to 22.00	add 4.25
22.01 to 32.00	add 4.50
32.01 to 52.00	add 5.00
over 52.00	add 8% of purchase

Credit Card Payment

Please charge my: _____ Mastercard _____ Visa

Account No. _____ Exp. date _____

Name on card _____

Authorized signature _____

PUBLICATION ORDER FORM

Please send to:

Name _____

Address _____

City _____ State _____ Zip _____

Phone (if we have questions about your order) _____

E-mail address _____
(for shipping notification)

Mail order form and payment to:
 Louisiana Geological Survey
 Louisiana State University
 3079 Energy, Coast & Environment Building
 Baton Rouge, LA 70803
 Phone: (225) 578-8590 • Fax: (225) 578-3662
 Email: poneil2@lsu.edu

QTY.	Publication Number & Title	Price Each	Total

	Subtotal	
	Shipping & Handling (see table at left)	
	4% TAX for shipments in Louisiana, 9% TAX for shipments in Baton Rouge	
Please include shipping and handling charges	TOTAL ENCLOSED (U.S. currency only)	

Shipping & Handling Charges

Up to \$7.00	add \$3.50
7.01 to 12.00	add 3.75
12.01 to 22.00	add 4.25
22.01 to 32.00	add 4.50
32.01 to 52.00	add 5.00
over 52.00	add 8% of purchase

Credit Card Payment

Please charge my: _____ Mastercard _____ Visa

Account No. _____ Exp. date _____

Name on card _____

Authorized signature _____

Louisiana Geological Survey

Chacko J. John, *Director and State Geologist*
Professor - Research

The Louisiana Geological Survey was created by Act 131 of the Legislature in 1934 to investigate the geology and resources of the state. The Survey's objectives are

- to develop information, through studies and mapping, about the characteristics and distribution of Louisiana's energy, mineral, water, and environmental resources;
- to describe and interpret the processes and natural hazards that affect the state's land, rivers, and coast;
- to provide reports, presentations, and educational programs to those interested in the state's resources and environment; and
- to carry out programs that lead to the development of resources that will benefit the state's economy, and to the protection of resources that must be sustained.

Research Faculty

Douglas Carlson
Marty Horn

Research Associates

Brian Harder
Paul Heinrich
Richard McCulloh
Riley Milner
Patrick O'Neill

Part Time

John Johnston
John Snead

Administrative

Jeanne Johnson
Melissa Esnault

Computer Analyst

Reed Bourgeois

Cartography

Lisa Pond
Robert Paulsell
Hampton Peele

The Survey is a part of Louisiana State University,
and the business office, open 8:00 a.m. to 4:30 p.m., is located in
Room 3079 of the Energy, Coast & Environment Building on the Baton Rouge campus.



2016 NEW TITLES

Geologic Maps

Geologic Quadrangle Maps (1:100,000)

- The Atchafalaya Bay Geologic Quadrangle
- The Morgan City Geologic Quadrangle
- The Monroe North Geologic Quadrangle
- The Mississippi River Delta Geologic Quadrangle
- The Tallulah, Louisiana/Mississippi Quadrangle

Open-File Geologic Quadrangle Maps (1:24,000)

- Hatchersville
- Greensburg
- Ashland
- Fryeburg
- North Highlands
- Buhler
- Moss Bluff
- Westlake

Open-File Quadrangle Maps (1:100,000)

- | | |
|---------|------------------|
| 2009-04 | Shreveport South |
| 2012-03 | Natchez |
| 2012-02 | Winnfield |
| 2013-01 | Natchitoches |

Open-File Series

- Columnar Section of Differentiated Wilcox Group Strata Exposed in Northwest Louisiana

State Parks and Lands Series

- Tunica Hills Wildlife Management Area and Angola State Penitentiary
- Soda Lake Wildlife Management Area

Geological Pamphlets

- Paleoenvironments, Depositional History, and Alternate Reference Sections for the Wilcox Group (Paleocene-Eocene) of Northwest Louisiana -East Texas

