

Events from the College of Music & Dramatic Arts

Fall 2024 Season

PROLOGUE

LSU

College of Music
& Dramatic Arts



Welcome to the Fall 2024 edition of Prologue!

Inside this booklet, you will find some of the most exciting fine arts events Baton Rouge has to offer. Whether you are captivated by the sonic explorations of the School of Music, the cutting-edge productions of the School of Theatre, or the heart-pounding energy of the Tiger Marching Band, our college is a truly unique performing arts organization which offers something for everyone. Our audiences enjoy a

wide variety of opportunities, including award-winning productions from the Turner-Fischer Center for Opera and Swine Palace equity theatre.

The performing arts provide a space where beauty and inspiration meet to create the magic that is live performance. Guided by our world-class faculty, our students present inspired and stirring performances as they develop into 21st century artists who are poised to achieve their dreams and keep the performing arts vibrant long into the future.

From all of us here at LSU, thank you for being a patron. Our students and faculty pour an immense amount of passion into each production and performance, and your support makes that hard work worthwhile. We are proud to contribute to the continued cultural prosperity of the state of Louisiana and the world, and I look forward to welcoming you to our events in the months ahead.

A handwritten signature in black ink, appearing to read 'Eric Lau' in a cursive, flowing script.

Eric Lau, DMA

Dean, LSU College of Music & Dramatic Arts



LSU School of Theatre Presents:
Ms. Holmes & Ms. Watson-Apt. 2B
 Sept. 26–Oct. 6, 2024
 Shaver Theatre

An irreverent, darkly comic, modern take on Sir Arthur Conan Doyle’s famous sleuth and sidekick, this fast-paced romp re-examines the world’s most famous detective story with a bold new feminist lens.



LSU School of Music Presents:
“Gloria”
 Oct. 15, 2024 // 7:30 p.m.
 LSU Union Theater

LSU’s flagship performing ensembles—the LSU Wind Ensemble, LSU Symphony Orchestra, and LSU A Cappella Choir—unite with GRAMMY-winning soprano vocalist Hila Plitmann to present the works of Pulitzer Prize-winning composer Carolyn Shaw, plus Francis Poulenc’s legendary setting of *Gloria*.



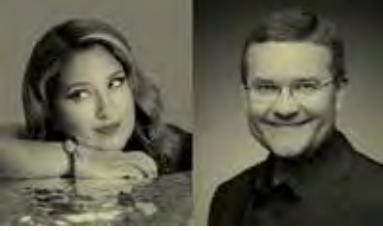
Turner-Fischer Center for Opera Presents:
L'elisir d'amore
 Oct. 25 & 27, 2024
 Shaver Theatre

The Turner-Fischer Center dives into the world of Italian *bel canto* opera with Donizetti’s heartwarming comedy, *L'elisir d'amore*. Nemorino yearns for the flirtatious Adina, but his only hope to win her heart is an “elixir” sold to him by the quack, Dr. Dulcamara. Find out if true love prevails with delightful plot twists set to some of this composer’s most beloved melodies.



Swine Palace Presents:
People, Places and Things
 Nov. 14–24, 2024
 Reilly Theatre

Emma was having the time of her life, but now she’s in rehab. Her first step is to admit that she has a problem. Of course, the problem isn’t with Emma, it’s with everything else. She needs to tell the truth, yet she’s smart enough to know that there’s no such thing. When intoxication feels like the only way to survive the modern world, how can she ever sober up?



Nicole Zuraitis with Boyd Professor Willis Delony & Friends

**Sept. 5, 2024 // 7:30 p.m.
School of Music Recital Hall**

Vocalist Nicole Zuraitis, winner of the 2024 GRAMMY Award for Best Jazz Vocal Album, joins LSU Boyd Professor Willis Delony and members of the LSU jazz faculty to start our performance season with a one-of-a-kind concert.



Sasha Cooke (Mezzo-soprano)

**Oct. 2, 2024 // 7:30 p.m.
School of Music Recital Hall**

Grammy-winning mezzo-soprano Sasha Cooke, hailed by the New York Times and Opera News, performs at LSU. She has sung at the Met, San Francisco Opera, English National Opera, Seattle Opera, Opera National de Bordeaux, and with 80+ symphony orchestras worldwide.



jeremy o'brian

**Sep. 26– Oct. 6, 2024
Shaver Theatre**

Ms. Holmes & Ms. Watson-Apt. 2B guest director, jeremy o'brian, is an acclaimed theatre-maker and educator, whose work explores the experiences of black gay boys and black culture. jeremy is now an associate writer with the Tectonic Theater Project in New York.



Tigerama

**Oct. 22, 2024 // 7:00 p.m.
LSU Union Theater**

The LSU Department of Bands and the LSU School of Music present the 42nd Tigerama: a musical extravaganza for all ages, featuring The Golden Band from Tigerland, LSU Wind Ensemble, LSU Symphonic Winds, Golden Girls and Colorguard.



Imani Winds Chamber Ensemble

**Oct. 1, 2024 // 7:30 p.m.
School of Music Recital Hall**

Celebrating over a quarter century of music making, the three-time GRAMMY nominated Imani Winds share their ground-breaking approach to the woodwind quintet for a two-day residency at LSU, culminating in an exciting recital performance.



Rosita y Conchita

**Oct. 24– Nov. 9, 2024
Main Library, Goodwood**

This fall, the School of Theatre, in partnership with EBR Libraries, is producing *Rosita y Conchita*, directed by Marina DeYoe-Pedraza. This play, based on an award winning children's book by Erich Haeger and Eric González, celebrates the traditions of Día de los Muertos and features rhyming bilingual dialogue, music, and life-size puppets.



Yilian Cañizares

Oct. 30, 2024 // 7:30 p.m.

School of Music Recital Hall

LSU welcomes the multi-talented violinist Yilian Cañizares for a recital performance featuring her signature blend of jazz, classical, Afro-Cuban rhythms, improvisation, and an “otherworldly” voice.



Joy Vandervort-Cobb

Nov. 14–24, 2024

Reilly Theatre

Renowned actor, director and frequent Swine Palace collaborator, Joy Vandervort-Cobb, returns to LSU to direct Duncan Macmillan’s powerful play *People, Places and Things*. This show explores the endless cycle of addiction inside a troubled mind.



loadbang

Nov. 5, 2024 // 7:30 p.m.

School of Music Recital Hall

LSU welcomes loadbang, a New York City-based mixed ensemble dedicated to cultivating enthusiasm for new music and featuring a unique instrumentation of baritone voice, bass clarinet, trumpet, and trombone.



LSU Symphony Orchestra

Nov. 20, 2024 // 7:30 p.m.

LSU Union Theatre

The symphonic poem by Paul Dukas, *The Sorcerer’s Apprentice*—think Disney’s *Fantasia*—headlines the LSU Symphony Orchestra’s second concert. Plus, hear oboist Andrew W. Parker in his LSU debut as a member of the School of Music faculty.



LSU Big Band with John Fedchock

Nov. 7, 2024 // 7:30 p.m.

LSU Union Theater

The LSU Jazz Studies area welcomes GRAMMY-nominated arranger and jazz trombonist John Fedchock—an alumnus of the Woody Herman Orchestra—to perform with the LSU Jazz Ensemble and LSU Jazz Lab band in an exciting live performance.



Candlelight Concert

Dec. 6, 2024 // 7:30 p.m.

LSU Union Theater

The LSU School of Music rings in the holiday season with the annual Candlelight Concert. Join us for a festive evening of holiday music, spirituals, and more performed by LSU’s Choirs.



Marburg: LSU Theatre Mainstage

Offering comprehensive training from the undergraduate to graduate level, the **School of Theatre** is home to a community of artists, educators, and scholars, dedicated to the creation, cultivation, and understanding of the dramatic narrative arts. From passionate actors, dancers, and filmmakers to innovative designers, directors and technicians we feature the work of our students through a diverse array of productions annually, ranging from classic to contemporary work.

A hallmark of the School is Swine Palace, the School's affiliated professional theatre company, which provides students, faculty, and staff the opportunity to work alongside professionals in all areas.

Ms. Holmes & Ms. Watson-Apt. 2B

Sept. 26–Oct. 6, 2024 // Shaver Theatre

Ms. Holmes and Ms. Watson-Apt. 2B by Kate Hamill is a modern, witty reimagining of the classic Sherlock Holmes stories, featuring the iconic detective duo as women. The play explores their dynamic partnership, clever deductions, and thrilling adventures, blending humor with mystery.

People, Places and Things

Nov. 14–24, 2024 // Reilly Theatre

People, Places and Things by Duncan Macmillan is a gripping drama that follows an actress battling addiction and navigating rehab. The play delves into her struggles, identity crises, and the blurred lines between reality and performance in her journey to recovery.

The **LSU Orchestral Studies** area provides a robust, fulfilling musical experience for all interested stakeholders at LSU. Audiences enjoy exciting and creative programming and concerts, while students collaborate with artists, composers, and LSU's world-renowned faculty. Orchestral ensemble opportunities are open to music majors and non-majors who seek study and participation in ensemble performance through a wide range of repertoire. We serve as a valuable resource to the greater orchestral and educational community of Louisiana.

LSU Symphony Orchestra
"Overture to Candide"
Sept. 26, 2024 // 7:30 p.m.
LSU Union Theater

LSU Music Presents: "Gloria"
Oct. 15, 2024 // 7:30 p.m.
LSU Union Theater

LSU Symphony Orchestra
"The Sorcerer's Apprentice"
Nov. 20, 2024 // 7:30 p.m.
LSU Union Theater

The Orchestral Studies area regularly hosts guest artists at LSU, such as GRAMMY-winning trio Time For Three (pictured). These visits further enhance our students' experience with masterclasses, joint rehearsals and concerts, and community outreach events.





LSU Jazz Showcase featuring the Jazz Ensemble

LSU's **Jazz Studies** area boasts a rich history that can be traced back to the 1950s. Legendary jazz alumni, such as trombonist Carl Fontana and composer/pianist Les Hooper, have made significant contributions to America's great art form. The current generation of alumni includes saxophonist Brad Walker, active touring artist and top call player in New Orleans, and pianist Oscar Rossignoli, widely recognized as a rising star in New Orleans and beyond.

The LSU Jazz Ensemble frequently hosts exhilarating big band concerts featuring world-renowned jazz artists. Recent guests have included trumpet luminary Wayne Bergeron, saxophonist and Louisiana native Branford Marsalis, and jazz fusion drummer Peter Erskine.

Nicole Zuraitis with Boyd Professor Willis Delony & Friends

Sept. 5, 2024 // 7:30 p.m.
School of Music Recital Hall

LSU Jazz Showcase

Oct. 3, 2024 // 7:30 p.m.
LSU Union Theater

LSU Big Band with John Fedchock

Nov. 7, 2024 // 7:30 p.m.
LSU Union Theater

LSU Chamber Jazz Concert

Nov. 14, 2024 // 7:30 p.m.
School of Music Recital Hall

LSU's **Composition** and **Experimental Music & Digital Media (EMDM)** areas push the boundaries of creativity and foster scholarship across the spectrum of music making. Students have opportunities to hear their music performed by a wide range of LSU ensembles and media, and even participate themselves in the Constantinides New Music Ensemble and the Laptop Orchestra of Louisiana.

The Constantinides New Music Ensemble, named for the late LSU Boyd Professor Dinos Constantinides, explores collaborative performances with other art forms while trailblazing new methods of community engagement through non-traditional venues. Recently, the ensemble journeyed to New York City for a performance of new music and LSU student compositions at Carnegie Hall.

Tony Arnold (Soprano)

Oct. 4, 2024 // 7:30 p.m.
School of Music Recital Hall

Cinema for the Ears

Oct. 7, 2024 // 7:30 p.m.
Digital Media Center Theatre

loadbang

Nov. 5, 2024 // 7:30 p.m.
School of Music Recital Hall

LSU Laptop Orchestra Concert

Nov. 6, 2024 // 7:30 p.m.
Digital Media Center Theatre

Undergraduate Composition Recital

Nov. 11, 2024 // 5:30 p.m.
School of Music Recital Hall

LSU Constantinides New Music Ensemble (CNME) Concert

Nov. 13, 2024 // 7:30 p.m.
School of Music Recital Hall

Really, Really New Music Marathon

Dec. 2, 2024 // 3:00 p.m.
School of Music Recital Hall





LSU Candlelight Concert featuring Choral groups and Symphony Orchestra

The **LSU Choral Studies** area offers a variety of choral ensembles for students, each with an individual character and mission. Chorus members represent a cross-section of the LSU student population, including undergraduate and graduate students, who perform literature ranging from dramatic cantatas to gospel spirituals and folksongs.

The LSU A Cappella Choir regularly performs bus tours of Louisiana and eastern Texas, continuing a School of Music tradition dating back to the 1930s. During their most recent trip in January 2023, the choir performed for over 2500 high school students and community members across seven stops.

LSU A Cappella Choir Concert

Oct. 8, 2024 // 7:30 p.m.

University United Methodist Church

LSU Music Presents: “Gloria”

Oct. 15, 2024 // 7:30 p.m.

LSU Union Theater

LSU Tiger Glee Club & Chorale Concert

Oct. 29, 2024 // 7:30 p.m.

University United Methodist Church

LSU Gospel Choir Concert

Nov. 21, 2024 // 7:30 p.m.

School of Music Recital Hall

LSU Candlelight Concert

Dec. 6, 2024 // 7:30 p.m.

LSU Union Theater

The **LSU Department of Bands** is a storied component of our School of Music, originating with the military traditions of the “Old War Skule” over a century ago. The department encompasses three distinct concert ensembles, plus the award-winning Tiger Marching Band, and hosts a wide array of performances, outreach events, and camps.

The LSU Symphonic Winds was chosen as one of the seven collegiate ensembles to perform at the College Band Directors National Association (CBDNA) Southern Division Conference, hosted at the University of Memphis in February 2024.

LSU Wind Ensemble Concert
Sept. 24, 2024 // 7:30 p.m.
LSU Union Theater

LSU Symphonic Winds Concert
Oct. 10, 2024 // 7:30 p.m.
LSU Union Theater

LSU Music Presents: “Gloria”
Oct. 15, 2024 // 7:30 p.m.
LSU Union Theater

Tigerama
Oct. 22, 2024 // 7:00 p.m.
LSU Union Theater

LSU Symphonic Band Concert
Nov. 19, 2024 // 7:30 p.m.
LSU Union Theater

LSU Symphonic Winds Concert
Nov. 21, 2024 // 7:30 p.m.
LSU Union Theater

LSU Wind Ensemble Concert
Nov. 26, 2024 // 7:30 p.m.
LSU Union Theater





Cendrillon Turner-Fischer Center for Opera

The **Turner-Fischer Center for Opera at LSU** offers a comprehensive training program for aspiring opera students, who work with a dynamic and accomplished faculty. The Center produces multiple full-scale productions each year, collaborating with the LSU Orchestral Studies area and LSU School of Theatre. Opera alumni can be seen performing on the world's greatest opera stages, including the Metropolitan Opera, La Scala, Covent Garden, Houston Grand Opera, San Francisco Opera, and more.

Productions at the Turner-Fischer Center are consistently recognized at high levels for their musical excellence and artistic direction, with recent shows such as Orson Rehearsed, Orpheé, and Cosí fan tutte winning accolades from the National Opera Association and The American Prize.

L'elisir d'amore (The Elixir of Love)

Oct. 25 & 27, 2024 // Shaver Theatre

The Turner-Fischer Center dives into the world of Italian *bel canto* opera with Donizetti's heartwarming comedy, *L'elisir d'amore*. Nemorino yearns for the flirtatious Adina, but his only hope to win her heart is an "elixir" sold to him by the quack, Dr. Dulcamara. Find out if true love prevails with delightful plot twists set to some of this composer's most beloved melodies.

Die Fledermaus (The Bat)

Nov. 24 & 25, 2024 // Shaver Theatre

The Turner-Fischer Center welcomes you to romantic Vienna in Johann Strauss II's *Die Fledermaus*. Rosalinda is determined to teach her unfaithful husband Eisenstein a lesson. During a lavish New Year's Eve ball held by wealthy Prince Orlofsky, plans and schemes come together with delicious results, set to the compositions of Europe's "Waltz King"!

FALL 2024 CALENDAR

From the traditional to the experimental, there are a multitude of opportunities to enjoy the performing arts at LSU.

Ticket Pricing Information

Single ticket pricing is available and noted in the calendar in order of **(1)** public admission, **(2)** LSU faculty/staff and seniors and **(3)** Students with ID. Listed prices do not reflect any fees. **No cash sales. All sales are final, no refunds.**

Tickets Promotions & Subscriptions

Subscriptions offer package discounts on non-student tickets. Subscriptions may be purchased online at lsu.edu/cmda/events or by calling **225-578-3527**.

Opera Mini Subscription:

20% off regular ticket prices, 1 ticket for 2 operas.
L'elisir d'amore and *Die Fledermaus*.

Adult	Faculty/Staff/Seniors	Student
\$52	\$36	\$20

Theatre Mini Subscription:

25% off regular ticket prices, 1 ticket for 2 events.
Ms. Holmes & Ms. Watson-Apt. 2B and *People, Places and Things*.

Adult	Faculty/Staff/Seniors	Student
\$48	\$33	\$16

Venue Key

.....

DMCT Digital Media Center Theatre 340 E. Parker Boulevard

RT Reilly Theatre 10 Tower Drive

SOM LSU School of Music Recital Hall 63 Infirmary Drive

ST Shaver Theatre 4230 Dalrymple Drive, Music & Dramatic Arts Building

UT LSU Union Theater Tower Drive

UUMC University United Methodist Church 3350 Dalrymple Drive

SEPTEMBER					
5	Th	Nicole Zuraitis with Willis Delony & Friends	7:30 p.m.	SOM	Free
10	Tu	Lin He & Frank Huang (Violin)	7:30 p.m.	SOM	Free
17	Tu	Liliia Oliinyk (Piano)	7:30 p.m.	SOM	Free
20	F	Nanci Belmont (Bassoon)	7:30 p.m.	SOM	Free
23	M	Semplice Duo (Flute & Piano)	7:30 p.m.	SOM	Free
24	Tu	LSU Wind Ensemble Concert	7:30 p.m.	UT	\$18/\$18/\$11
26	Th	LSU Symphony Orchestra	7:30 p.m.	UT	\$18/\$18/\$11
26	Th	LSU Theatre: <i>Ms. Holmes & Ms. Watson-Apt.2B</i>	7:30 p.m.	ST	Preview
27	F	LSU Theatre: <i>Ms. Holmes & Ms. Watson-Apt.2B</i>	7:30 p.m.	ST	\$22/\$17/\$9
28	Sa	LSU Theatre: <i>Ms. Holmes & Ms. Watson-Apt.2B</i>	2:00 p.m.	ST	\$22/\$17/\$9
OCTOBER					
1	Tu	Imani Winds Chamber Ensemble	7:30 p.m.	SOM	Free
2	W	Sasha Cooke (Mezzo-soprano)	7:30 p.m.	SOM	Free
2	W	LSU Theatre: <i>Ms. Holmes & Ms. Watson-Apt.2B</i>	7:30 p.m.	ST	\$22/\$17/\$9
3	Th	LSU Jazz Showcase	7:30 p.m.	UT	\$18/\$18/\$11
3	Th	LSU Theatre: <i>Ms. Holmes & Ms. Watson-Apt.2B</i>	7:30 p.m.	ST	\$22/\$17/\$9
4	F	Tony Arnold (Soprano)	7:30 p.m.	SOM	Free
4	F	LSU Theatre: <i>Ms. Holmes & Ms. Watson-Apt.2B</i>	7:30 p.m.	ST	\$22/\$17/\$9
5	Sa	LSU Theatre: <i>Ms. Holmes & Ms. Watson-Apt.2B</i>	7:30 p.m.	ST	\$22/\$17/\$9
6	Su	Lin He (Violin)	2:00 p.m.	SOM	Free
6	Su	LSU Theatre: <i>Ms. Holmes & Ms. Watson-Apt.2B</i>	2:00 p.m.	ST	\$22/\$17/\$9
7	M	Allison Nicotera (Bassoon)	5:30 p.m.	SOM	Free
7	M	Cinema for the Ears	7:30 p.m.	DMCT	Free
8	Tu	LSU A Cappella Choir Concert	7:30 p.m.	UUMC	Free
10	Th	LSU Symphonic Winds Concert	7:30 p.m.	UT	\$18/\$18/\$11
13	Su	Yung-Chiao Wei (Bass) & Chaoi Chou (Piano)	4:00 p.m.	SOM	Free
15	Tu	LSU Music Presents: "Gloria"	7:30 p.m.	UT	\$18/\$18/\$11
22	Tu	Tigerama	7:00 p.m.	UT	Starts at \$25
25	F	LSU Opera: <i>L'elisir d'amore</i>	7:30 p.m.	ST	\$32/\$22/\$12

27	Su	LSU Opera: <i>L'elisir d'amore</i>	3:00 p.m.	ST	\$32/\$22/\$12
28	M	Gabe Fridkis & Eleni Katz (Flute & Bassoon)	7:30 p.m.	SOM	Free
29	Tu	LSU Tiger Glee Club & Chorale Concert	7:30 p.m.	UUMC	Free
30	W	Yilian Cañizares (Violin)	7:30 p.m.	SOM	Free
NOVEMBER					
1	F	Robert Grayson, Paul Groves, and Friends	7:30 p.m.	SOM	Free
5	Tu	loadbang	7:30 p.m.	SOM	Free
6	W	LSU Laptop Orchestra Concert	7:30 p.m.	DMCT	Free
7	Th	LSU Big Band with John Fedchock	7:30 p.m.	UT	\$18/\$18/\$11
11	M	Undergraduate Composition Recital	5:30 p.m.	SOM	Free
13	W	LSU Constantinides New Music Ensemble (CNME)	7:30 p.m.	SOM	Free
14	Th	LSU Chamber Jazz	7:30 p.m.	SOM	Free
14	Th	Swine Palace Presents: <i>People, Places and Things</i>	7:30 p.m.	RT	Preview
15	F	Swine Palace Presents: <i>People, Places and Things</i>	7:30 p.m.	RT	\$32/\$22/\$9
16	Sa	Swine Palace Presents: <i>People, Places and Things</i>	7:30 p.m.	RT	\$32/\$22/\$9
17	Su	Swine Palace Presents: <i>People, Places and Things</i>	2:00 p.m.	RT	\$32/\$22/\$9
19	Tu	LSU Symphonic Band Concert	7:30 p.m.	UT	\$18/\$18/\$11
20	W	LSU Symphony Orchestra	7:30 p.m.	UT	\$18/\$18/\$11
20	W	Swine Palace Presents: <i>People, Places and Things</i>	7:30 p.m.	RT	\$32/\$22/\$9
21	Tu	LSU Gospel Choir Concert	7:30 p.m.	SOM	Free
21	Th	LSU Symphonic Winds	7:30 p.m.	UT	\$18/\$18/\$11
21	Th	Swine Palace Presents: <i>People, Places and Things</i>	7:30 p.m.	RT	\$32/\$22/\$9
22	F	Swine Palace Presents: <i>People, Places and Things</i>	7:30 p.m.	RT	\$32/\$22/\$9
24	Su	LSU Opera Presents: <i>Die Fledermaus</i>	3:00 p.m.	ST	\$32/\$22/\$12
24	Su	Swine Palace Presents: <i>People, Places and Things</i>	2:00 p.m.	RT	\$32/\$22/\$9
25	M	LSU Opera Presents: <i>Die Fledermaus</i>	7:30 p.m.	ST	\$32/\$22/\$12
26	Tu	LSU Wind Ensemble Concert	7:30 p.m.	UT	\$18/\$18/\$11
DECEMBER					
2	M	Really, Really New Music Marathon	3:00 p.m.	SOM	Free
6	F	LSU Candlelight Concert	7:30 p.m.	UT	\$18/\$18/\$11

Box Office

Located at the performance venue and open one hour prior to the event until 30 minutes after the event begins.

Online

Visit lsu.edu/cmda/events for secure online purchasing.

In Person

Available at the performance venue. To avoid long box office lines please purchase online. No cash sales.

Contact

Call **225-578-3527** or email cmdaboxoffice@lsu.edu for more information.

Event Update

Please follow us on social media @LSUMusic and @LSUTheatre for updates and cancellations.

Connect

Sign up to receive Prologue with news and upcoming events at lsu.edu/cmda/events/guide

Louisiana State University

College of Music & Dramatic Arts
General Questions: 225-578-4174
CMDA Box Office: 225-578-3527

Venues



Shaver Theatre

In the MDA Building,
Dalrymple Dr. &
Infirmary Rd.



School of Music Recital Hall

In the SOM Building,
Dalrymple Dr. &
Infirmary Rd.



Reilly Theatre

Tower Dr., Between
Stadium Dr. &
Highland Rd.



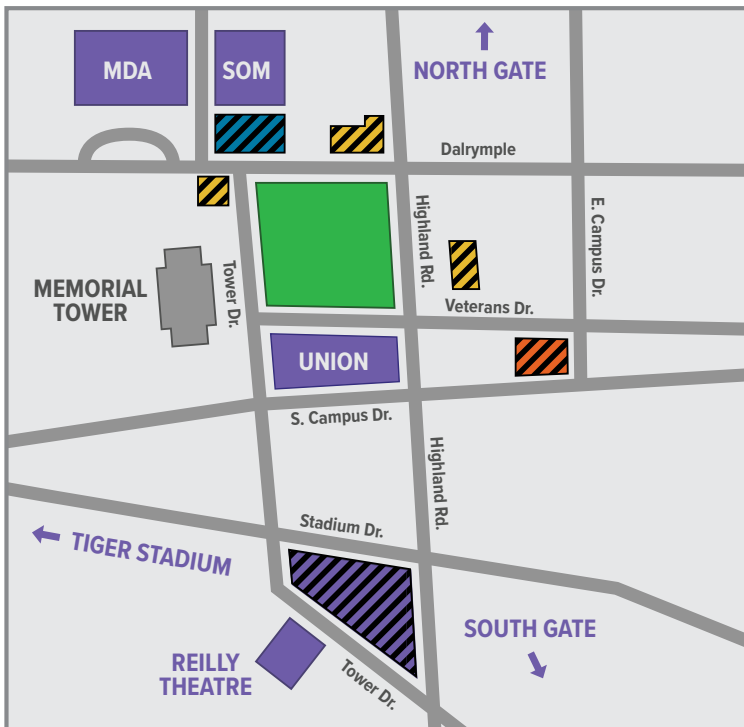
LSU Union Theater

Veterans Dr. &
Highland Rd.

Parking

Parking is available in the lots surrounding the venues in the Music & Dramatic Arts Building, the School of Music, and the Reilly Theatre. The School of Music lot, Reilly Theatre lot, and street parking are free after 4:30 p.m. Metered parking is in effect until 8:00 p.m.

For events located in the LSU Union Theater, paid parking is available in the Union Square parking garage located on Highland Road.



Key

- UT – LSU Union Theater
- MDA – Music & Dramatic Arts
- SOM – School of Music

- Parking Garage
- Official Visitor Pre-Paid Parking
- SOM Parking in Pleasant Lot
- Reilly Parking in Tower Drive Lot